

Wee2 Antibody (F43870)

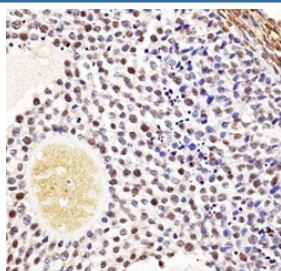
Catalog No.	Formulation	Size
F43870-0.4ML	In 1X PBS, pH 7.4, with 0.09% sodium azide	0.4 ml
F43870-0.08ML	In 1X PBS, pH 7.4, with 0.09% sodium azide	0.08 ml

[Bulk quote request](#)

Availability	1-3 business days
Species Reactivity	Human, Mouse
Format	Antigen affinity purified
Clonality	Polyclonal (rabbit origin)
Isotype	Rabbit Ig
Purity	Antigen affinity
UniProt	Q66JT0
Applications	Western Blot : 1:1000 IHC (Paraffin) : 1:10-1:50
Limitations	This Wee2 antibody is available for research use only.

95
72
55
36
28

Wee2 antibody western blot analysis in HepG2 lysate.



Wee2 antibody immunohistochemistry analysis in formalin fixed and paraffin embedded mouse ovarian tissue.

Description

Phosphorylates and inhibits CDK1. May act as a negative regulator of entry into mitosis (G2 to M transition).

Application Notes

Titration of the Wee2 antibody may be required due to differences in protocols and secondary/substrate sensitivity.

Immunogen

A portion of amino acids 364-393 from the mouse protein was used as the immunogen for this Wee2 antibody.

Storage

Aliquot the Wee2 antibody and store frozen at -20oC or colder. Avoid repeated freeze-thaw cycles.