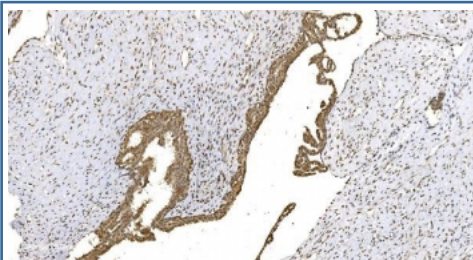


Wee1 Antibody (RQ4901)

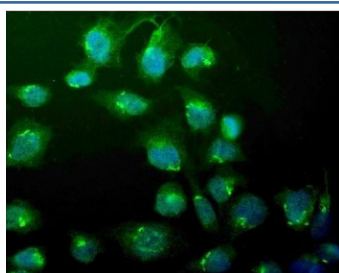
Catalog No.	Formulation	Size
RQ4901	0.5mg/ml if reconstituted with 0.2ml sterile DI water	100 ug

Bulk quote request

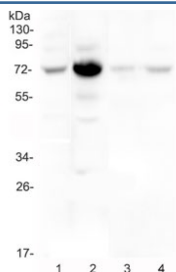
Availability	1-3 business days
Species Reactivity	Human
Format	Antigen affinity purified
Clonality	Polyclonal (rabbit origin)
Isotype	Rabbit IgG
Purity	Antigen affinity purified
Buffer	Lyophilized from 1X PBS with 2% Trehalose and 0.025% sodium azide
UniProt	P30291
Applications	Western Blot : 0.5-1ug/ml Immunofluorescence (FFPE) : 2-4ug/ml Flow Cytometry : 1-3ug/million cells Immunohistochemistry (FFPE) : 1-2ug/ml
Limitations	This Wee1 antibody is available for research use only.



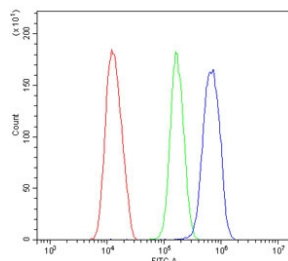
IHC staining of FFPE human breast carcinoma with Wee1 antibody. HIER: boil tissue sections in pH 8 EDTA for 20 min and allow to cool before testing.



Immunofluorescent staining of FFPE human U-2 OS cells with Wee1 antibody (green) and DAPI nuclear stain (blue). HIER: steam section in pH6 citrate buffer for 20 min.



Western blot testing of human 1) HeLa, 2) placenta, 3) A431 and 4) U-2 OS cel lysate with Wee1 antibody at 0.5ug/ml. Predicted molecular weight ~72 kDa.



Flow cytometry testing of human SiHa cells with Wee1 antibody at 1ug/million cells (blocked with goat sera); Red=cells alone, Green=isotype control, Blue= Wee1 antibody.

Description

Wee1 is a nuclear kinase belonging to the Ser/Thr family of protein kinases in the fission yeast *Schizosaccharomyces pombe* (*S. pombe*). It is mapped to 11p15.4. This gene encodes a nuclear protein, which is a tyrosine kinase belonging to the Ser/Thr family of protein kinases. This protein catalyzes the inhibitory tyrosine phosphorylation of CDC2/cyclin B kinase, and appears to coordinate the transition between DNA replication and mitosis by protecting the nucleus from cytoplasmically activated CDC2 kinase.

Application Notes

Optimal dilution of the Wee1 antibody should be determined by the researcher.

Immunogen

Amino acids ELNAEKFKNSLLQKELKKAQMAKAAAEERALFTDR from the human protein were used as the immunogen for the Wee1 antibody.

Storage

After reconstitution, the Wee1 antibody can be stored for up to one month at 4°C. For long-term, aliquot and store at -20°C. Avoid repeated freezing and thawing.