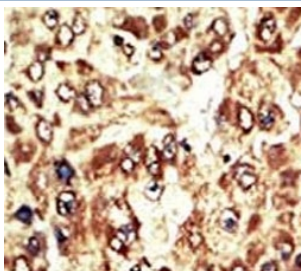


Wee1 Antibody (F51038)

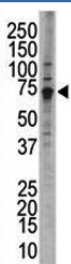
| Catalog No. | Formulation | Size |
|---------------|--|---------|
| F51038-0.4ML | In 1X PBS, pH 7.4, with 0.09% sodium azide | 0.4 ml |
| F51038-0.08ML | In 1X PBS, pH 7.4, with 0.09% sodium azide | 0.08 ml |

[Bulk quote request](#)

| | |
|-----------------------------|--|
| Availability | 1-3 business days |
| Species Reactivity | Human |
| Predicted Reactivity | Mouse, Rat |
| Format | Purified |
| Clonality | Polyclonal (rabbit origin) |
| Isotype | Rabbit Ig |
| Purity | Purified |
| UniProt | P30291 |
| Applications | Western Blot : 1:1000 IHC (Paraffin) : 1:50-1:100 |
| Limitations | This Wee1 antibody is available for research use only. |



IHC analysis of FFPE human hepatocarcinoma tissue stained with the Wee1 antibody



Western blot analysis of Wee1 antibody and HL-60 cell lysate; Predicted molecular weight ~72 kDa.

Description

Wee1 is a nuclear protein, which is a tyrosine kinase belonging to the Ser/Thr family of protein kinases. This protein catalyzes the inhibitory tyrosine phosphorylation of CDC2/cyclin B kinase, and appears to coordinate the transition between DNA replication and mitosis by protecting the nucleus from cytoplasmically activated CDC2 kinase.

Application Notes

Titration of the Wee1 antibody may be required due to differences in protocols and secondary/substrate sensitivity.

Immunogen

A portion of amino acids 604-634 from the human protein was used as the immunogen for this Wee1 antibody.

Storage

Aliquot the Wee1 antibody and store frozen at -20oC or colder. Avoid repeated freeze-thaw cycles.