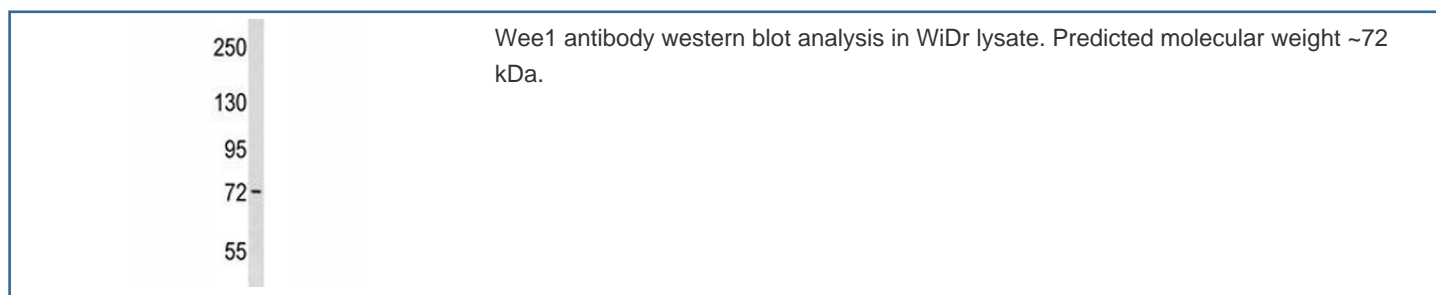


Wee1 Antibody (F46995)

Catalog No.	Formulation	Size
F46995-0.4ML	In 1X PBS, pH 7.4, with 0.09% sodium azide	0.4 ml
F46995-0.08ML	In 1X PBS, pH 7.4, with 0.09% sodium azide	0.08 ml

[Bulk quote request](#)

Availability	1-3 business days
Species Reactivity	Human, Mouse
Predicted Reactivity	Rat
Format	Antigen affinity purified
Host	Rabbit
Clonality	Polyclonal (rabbit origin)
Isotype	Rabbit Ig
Purity	Antigen affinity
UniProt	P47810
Applications	Western Blot : 1:1000
Limitations	This Wee1 antibody is available for research use only.



Description

Wee1 may act as a negative regulator of entry into mitosis (G2 to M transition) by protecting the nucleus from cytoplasmically activated cyclin B1-complexed CDK1 before the onset of mitosis. Its activity increases during S and G2 phases and decreases at M phase when it is hyperphosphorylated. A correlated decrease in protein level occurs at M/G1 phase, probably due to its degradation. Specifically phosphorylates and inactivates cyclin B1-complexed CDK1 reaching a maximum during G2 phase and a minimum as cells enter M phase. Phosphorylation of cyclin B1-CDK1 occurs

exclusively on 'Tyr-15' and phosphorylation of monomeric CDK1 does not occur (By similarity).

Application Notes

Titration of the Wee1 antibody may be required due to differences in protocols and secondary/substrate sensitivity.

Immunogen

A portion of amino acids 202-230 from the mouse protein was used as the immunogen for this Wee1 antibody.

Storage

Aliquot the Wee1 antibody and store frozen at -20oC or colder. Avoid repeated freeze-thaw cycles.