

## WDR70 Antibody (F54351)

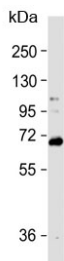
Catalog No.	Formulation	Size
F54351-0.4ML	In 1X PBS, pH 7.4, with 0.09% sodium azide	0.4 ml
F54351-0.08ML	In 1X PBS, pH 7.4, with 0.09% sodium azide	0.08 ml

[Bulk quote request](#)

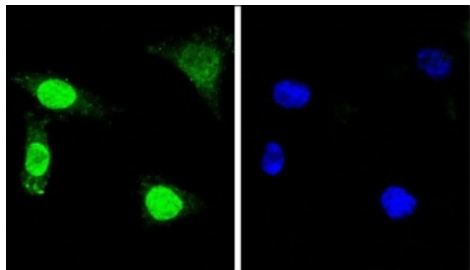
<b>Availability</b>	1-3 business days
<b>Species Reactivity</b>	Human
<b>Format</b>	Purified
<b>Clonality</b>	Polyclonal (rabbit origin)
<b>Isotype</b>	Rabbit Ig
<b>Purity</b>	Antigen affinity purified
<b>UniProt</b>	Q9NW82
<b>Localization</b>	Nuclear
<b>Applications</b>	Western Blot : 1:500-1:2000 Flow Cytometry : 1:25 (1x10 <sup>6</sup> cells) Immunofluorescence : 1:25 Immunohistochemistry (FFPE) : 1:25
<b>Limitations</b>	This WDR70 antibody is available for research use only.

kDa  
95  
72  
55  
36  
28  
17

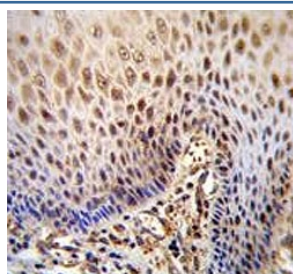
Western blot testing of human HeLa cell lysate with WDR70 antibody. Expected molecular weight ~70 kDa.



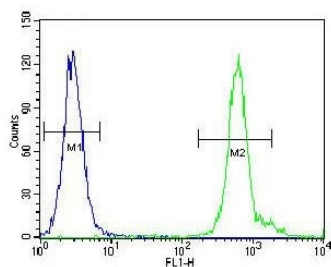
Western blot testing of human HL60 cell lysate with WDR70 antibody. Expected molecular weight ~70 kDa.



Immunofluorescent staining of fixed and permeabilized human HeLa cells with WDR70 antibody (green) and DAPI nuclear stain (blue).



IHC testing of FFPE human esophageal carcinoma tissue with WDR70 antibody. HIER: steam section in pH6 citrate buffer for 20 min and allow to cool prior to staining.



Flow cytometry testing of fixed and permeabilized human HeLa cells with WDR70 antibody; Blue=isotype control, Green= WDR70 antibody.

## Description

Additional names: WD repeat-containing protein 70

## Application Notes

The stated application concentrations are suggested starting points. Titration of the WDR70 antibody may be required due to differences in protocols and secondary/substrate sensitivity.

## Immunogen

A portion of amino acids 575-604 from the human protein was used as the immunogen for the WDR70 antibody.

## Storage

Aliquot the WDR70 antibody and store frozen at -20°C or colder. Avoid repeated freeze-thaw cycles.

