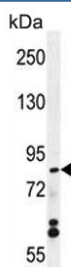


WDR27 Antibody (F54614)

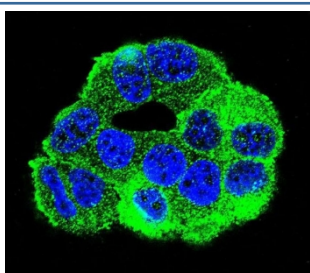
Catalog No.	Formulation	Size
F54614-0.4ML	In 1X PBS, pH 7.4, with 0.09% sodium azide	0.4 ml
F54614-0.08ML	In 1X PBS, pH 7.4, with 0.09% sodium azide	0.08 ml

[Bulk quote request](#)

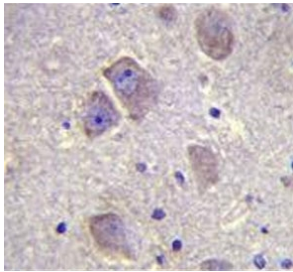
Availability	1-3 business days
Species Reactivity	Human
Format	Purified
Clonality	Polyclonal (rabbit origin)
Isotype	Rabbit Ig
Purity	Antigen affinity purified
UniProt	A2RRH5
Applications	Flow Cytometry : 1:25 (1x10 ⁶ cells) Immunofluorescence : 1:25 Immunohistochemistry (FFPE) : 1:25 Western Blot : 1:500-1:2000
Limitations	This WDR27 antibody is available for research use only.



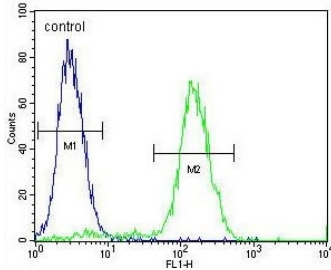
Western blot testing of human MCF7 cell lysate with WDR27 antibody. Predicted molecular weight ~90 kDa.



Immunofluorescent staining of human MCF7 cells with WDR27 antibody (green) and DAPI nuclear stain (blue).



IHC testing of FFPE human brain tissue with WDR27 antibody. HIER: steam section in pH6 citrate buffer for 20 min and allow to cool prior to staining.



Flow cytometry testing of human MCF7 cells with WDR27 antibody; Blue=isotype control, Green= WDR27 antibody.

Application Notes

The stated application concentrations are suggested starting points. Titration of the WDR27 antibody may be required due to differences in protocols and secondary/substrate sensitivity.

Immunogen

A portion of amino acids 228-256 from the human protein was used as the immunogen for the WDR27 antibody.

Storage

Aliquot the WDR27 antibody and store frozen at -20oC or colder. Avoid repeated freeze-thaw cycles.