

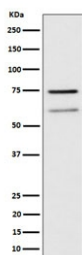
WDR1 Antibody / WD repeat-containing protein 1 [clone 29W47] (RQ8669)

Catalog No.	Formulation	Size
RQ8669	Antibody in PBS with 0.02% sodium azide, 50% glycerol and 0.4-0.5mg/ml BSA	100 ul

Recombinant RABBIT MONOCLONAL

[Bulk quote request](#)

Availability	1-3 days
Species Reactivity	Human
Format	Purified
Clonality	Recombinant Rabbit Monoclonal
Isotype	Rabbit IgG
Clone Name	29W47
Purity	Affinity chromatography
UniProt	O75083
Applications	Western Blot : 1:500-1:2000
Limitations	This WDR1 antibody is available for research use only.



Western blot testing of human Raji cell lysate with WDR1 antibody. Predicted molecular weight: ~66 kDa and ~51 kDa (two isoforms).

Description

WD repeat-containing protein 1 is involved in assembly and maintenance of epithelial apical cell junctions and plays a role in the organization of the perijunctional actomyosin belt. [UniProt]

Application Notes

Optimal dilution of the WDR1 antibody should be determined by the researcher.

Immunogen

A synthetic peptide specific to human WDR1 protein was used as the immunogen for the WDR1 Antibody.

Storage

Store the WDR1 antibody at -20oC.