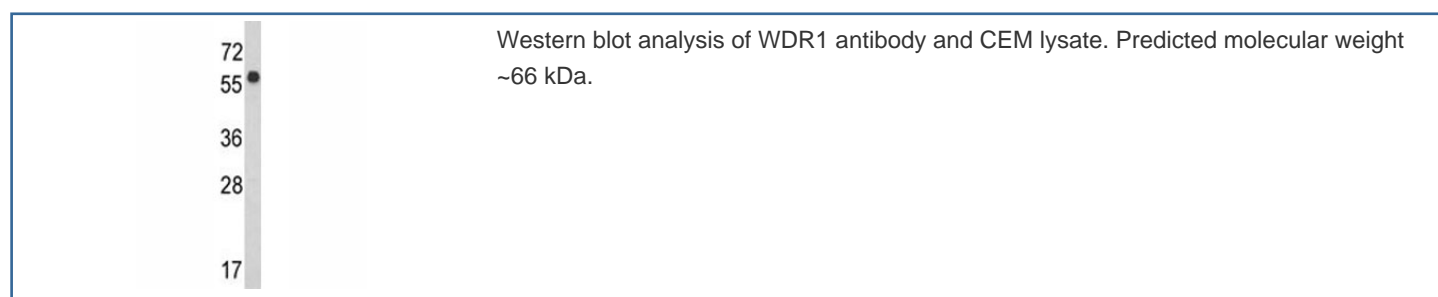


## WDR1 Antibody (F48322)

Catalog No.	Formulation	Size
F48322-0.4ML	In 1X PBS, pH 7.4, with 0.09% sodium azide	0.4 ml
F48322-0.08ML	In 1X PBS, pH 7.4, with 0.09% sodium azide	0.08 ml

[Bulk quote request](#)

<b>Availability</b>	1-3 business days
<b>Species Reactivity</b>	Human
<b>Predicted Reactivity</b>	Bovine
<b>Format</b>	Purified
<b>Host</b>	Rabbit
<b>Clonality</b>	Polyclonal (rabbit origin)
<b>Isotype</b>	Rabbit Ig
<b>Purity</b>	Purified
<b>UniProt</b>	O75083
<b>Applications</b>	Western Blot : 1:1000
<b>Limitations</b>	This WDR1 antibody is available for research use only.



## Description

WDR1 is a protein containing 9 WD repeats. WD repeats are approximately 30- to 40-amino acid domains containing several conserved residues, mostly including a trp-asn at the C-terminal end. WD domains are involved in protein-protein interactions. This protein may help induce the disassembly of actin filaments.

## Application Notes

Titration of the WDR1 antibody may be required due to differences in protocols and secondary/substrate sensitivity.

## **Immunogen**

A portion of amino acids 548-577 from the human protein was used as the immunogen for this WDR1 antibody.

## **Storage**

Aliquot the WDR1 antibody and store frozen at -20oC or colder. Avoid repeated freeze-thaw cycles.