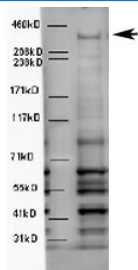


WDFY3 Antibody (R36003)

Catalog No.	Formulation	Size
R36003-100UG	0.5 mg/ml in 1X TBS, pH7.3, with 0.5% BSA (US sourced) and 0.02% sodium azide	100 ug

[Bulk quote request](#)

Availability	1-3 business days
Species Reactivity	Human, Mouse
Predicted Reactivity	Cow, Rat
Format	Antigen affinity purified
Host	Goat
Clonality	Polyclonal (goat origin)
Isotype	Goat Ig
Purity	Antigen affinity
Gene ID	23001
Applications	Western Blot : 4-6ug/ml ELISA (peptide) LOD : 1:128000
Limitations	This WDFY3 antibody is available for research use only.



Western blot testing of mouse brain lysate with WDFY3 antibody at 5ug/ml. Predicted molecular weight ~395kDa.

Description

Additional name(s) for this target protein: WD repeat and FYVE domain containing 3; ALFY; autophagy-linked FYVE

Application Notes

Optimal dilution of the WDFY3 antibody should be determined by the researcher.

Immunogen

Amino acids SPERSTRRTQQKEFQT were used as the immunogen for this WDFY3 antibody.

Storage

Aliquot and store the WDFY3 antibody at -20oC.