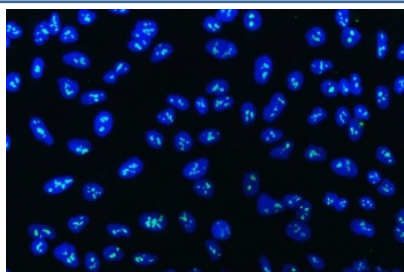


WD repeat-containing protein 3 Antibody / WDR3 (RQ7488)

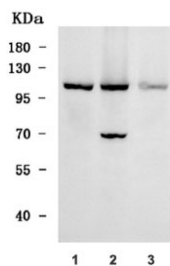
Catalog No.	Formulation	Size
RQ7488	0.5mg/ml if reconstituted with 0.2ml sterile DI water	100 ug

Bulk quote request

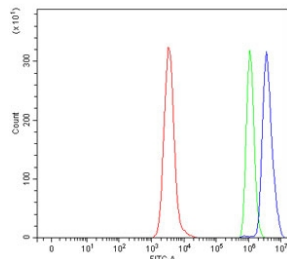
Availability	1-3 business days
Species Reactivity	Human
Format	Antigen affinity purified
Clonality	Polyclonal (rabbit origin)
Isotype	Rabbit IgG
Purity	Antigen affinity purified
Buffer	Lyophilized from 1X PBS with 2% Trehalose
UniProt	Q9UNX4
Localization	Nuclear
Applications	Western Blot : 0.5-1ug/ml Immunofluorescence : 5ug/ml Flow Cytometry : 1-3ug/million cells Direct ELISA : 0.1-0.5ug/ml
Limitations	This WD repeat-containing protein 3 antibody is available for research use only.



Immunofluorescent staining of FFPE human A549 cells with WD repeat-containing protein 3 antibody (green) and DAPI nuclear stain (blue). HIER: steam section in pH6 citrate buffer for 20 min.



Western blot testing of human 1) HeLa, 2) 293T and 3) U-251 cell lysate with WD repeat-containing protein 3 antibody. Predicted molecular weight ~106 kDa.



Flow cytometry testing of human Daudi cells with WD repeat-containing protein 3 antibody at 1ug/million cells (blocked with goat sera); Red=cells alone, Green=isotype control, Blue= WD repeat-containing protein 3 antibody.

Description

WD repeat-containing protein 3 is a protein that in humans is encoded by the WDR3 gene. This gene encodes a nuclear protein containing 10 WD repeats. WD repeats are approximately 30- to 40-amino acid domains containing several conserved residues, which usually include a trp-asn at the C-terminal end. Proteins belonging to the WD repeat family are involved in a variety of cellular processes, including cell cycle progression, signal transduction, apoptosis, and gene regulation.

Application Notes

Optimal dilution of the WD repeat-containing protein 3 antibody should be determined by the researcher.

Immunogen

E. coli-derived recombinant human protein (amino acids M1-E927) was used as the immunogen for the WD repeat-containing protein 3 antibody.

Storage

After reconstitution, the WD repeat-containing protein 3 antibody can be stored for up to one month at 4°C. For long-term, aliquot and store at -20°C. Avoid repeated freezing and thawing.