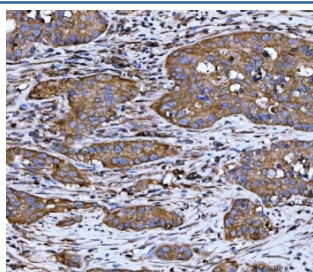


## WD repeat-containing protein 1 Antibody / WDR1 [clone 5C11C8] (RQ7133)

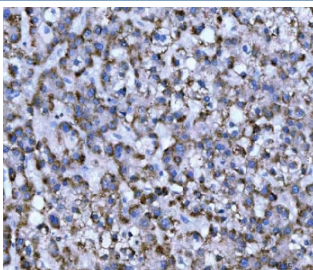
Catalog No.	Formulation	Size
RQ7133	0.5mg/ml if reconstituted with 0.2ml sterile DI water	100 ug

**Bulk quote request**

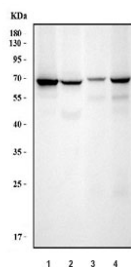
<b>Availability</b>	1-3 business days
<b>Species Reactivity</b>	Human, Mouse, Rat
<b>Format</b>	Antigen affinity purified
<b>Clonality</b>	Monoclonal (mouse origin)
<b>Isotype</b>	Mouse IgG2b
<b>Clone Name</b>	5C11C8
<b>Purity</b>	Antigen affinity purified
<b>Buffer</b>	Lyophilized from 1X PBS with 2% Trehalose
<b>UniProt</b>	O75083
<b>Localization</b>	Cytoplasmic
<b>Applications</b>	Western Blot : 0.5-1ug/ml Immunohistochemistry (FFPE) : 2-5ug/ml
<b>Limitations</b>	This WD repeat-containing protein 1 antibody is available for research use only.



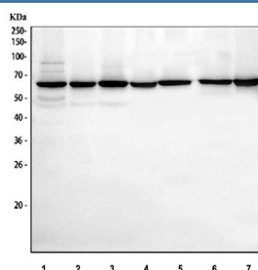
IHC staining of FFPE human colorectal adenocarcinoma tissue with WD repeat-containing protein 1 antibody. HIER: boil tissue sections in pH8 EDTA for 20 min and allow to cool before testing.



IHC staining of FFPE human liver cancer tissue with WD repeat-containing protein 1 antibody. HIER: boil tissue sections in pH8 EDTA for 20 min and allow to cool before testing.



Western blot testing of 1) human U-87 MG, 2) human A549, 3) mouse lung and 4) mouse liver tissue lysate with WD repeat-containing protein 1 antibody. Expected molecular weight ~66 kDa.



Western blot testing of 1) human U-251, 2) human HeLa, 3) human HEL, 4) human RT-4, 5) rat brain, 6) mouse brain and 7) mouse intestine tissue lysate with WD repeat-containing protein 1 antibody. Expected molecular weight ~66 kDa.

## Description

WD repeat-containing protein 1 is a protein that in humans is encoded by the WDR1 gene. It is mapped to 4p16.1. This gene encodes a protein containing 9 WD repeats. WD repeats are approximately 30- to 40-amino acid domains containing several conserved residues, mostly including a trp-asn at the C-terminal end. WD domains are involved in protein-protein interactions. The encoded protein may help induce the disassembly of actin filaments. Two transcript variants encoding different isoforms have been found for this gene.

## Application Notes

Optimal dilution of the WD repeat-containing protein 1 antibody should be determined by the researcher.

## Immunogen

C-terminal amino acids MDMMVYVWTLSDPETRVKIQDAHRLHHV were used as the immunogen for the WD repeat-containing protein 1 antibody.

## Storage

After reconstitution, the WD repeat-containing protein 1 antibody can be stored for up to one month at 4°C. For long-term, aliquot and store at -20°C. Avoid repeated freezing and thawing.