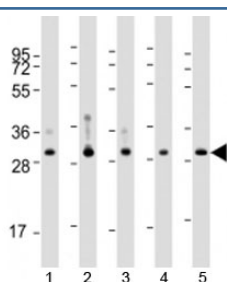


## WBP1 Antibody / WW domain binding protein 1 (F53825)

Catalog No.	Formulation	Size
F53825-0.2ML	In 1X PBS, pH 7.4, with 0.09% sodium azide	0.2 ml
F53825-0.05ML	In 1X PBS, pH 7.4, with 0.09% sodium azide	0.05 ml

[Bulk quote request](#)

<b>Availability</b>	1-3 business days
<b>Species Reactivity</b>	Human
<b>Format</b>	Antigen affinity purified
<b>Clonality</b>	Polyclonal (rabbit origin)
<b>Isotype</b>	Rabbit Ig
<b>Purity</b>	Antigen affinity
<b>UniProt</b>	Q96G27
<b>Applications</b>	Western Blot : 1:2000-1:4000
<b>Limitations</b>	This WBP1 antibody is available for research use only.



Western blot testing of human 1) MCF-7, 2) liver, 3) lung, 4) placenta and 5) kidney lysate with WBP1 antibody at 1:4000. Predicted molecular weight: 29 kDa.

## Description

The globular WW domain, named for the conserved tryptophan residues in the protein motif present in various structural and regulatory proteins, is known to play a role in the mediation of protein-protein interactions. [RefSeq]

## Application Notes

Titration of the WBP1 antibody may be required due to differences in protocols and secondary/substrate sensitivity.

## Immunogen

A portion of amino acids 202-234 from the human protein was used as the immunogen for the WBP1 antibody.

## Storage

Aliquot the WBP1 antibody and store frozen at -20oC or colder. Avoid repeated freeze-thaw cycles.