

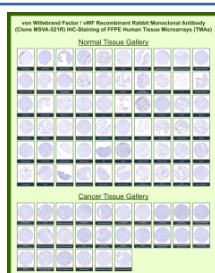
VWF Antibody / von Willebrand factor [clone MSVA-521R] (V6130)

Catalog No.	Formulation	Size
V6130-100UG	Antibody in 1X PBS with 0.05% BSA, 0.05% sodium azide	100 ug
V6130-20UG	Antibody in 1X PBS with 0.05% BSA, 0.05% sodium azide	20 ug

Recombinant **RABBIT MONOCLONAL**

[Bulk quote request](#)

Species Reactivity	Human
Format	Purified
Host	Rabbit
Clonality	Recombinant Rabbit Monoclonal
Isotype	Rabbit IgG, kappa
Clone Name	MSVA-521R
UniProt	P04275
Localization	Extracellular matrix, Extracellular space, Secreted
Applications	Immunohistochemistry (FFPE) : 1-2ug/ml
Limitations	This VWF/von Willebrand factor antibody is available for research use only.



von Willebrand factor Rabbit Recombinant Monoclonal Antibody (MSVA-521R) tested on many normal and cancer tissues. The immunohistochemistry staining in these tissues aligns with the expression data in Human Protein Atlas.

Manual Protocol: Freshly cut sections should be used (less than 10 days between cutting and staining). Heat-induced antigen retrieval for 5 minutes in an autoclave at 121°C in pH 7.8 Target Retrieval Solution buffer. Apply the antibody at a dilution of 1:150 at 37°C for 60 minutes. Visualization of bound antibody by the EnVision Kit (Dako, Agilent) according to the manufacturer's directions.

Application Notes

- Optimal dilution of the VWF/von Willebrand factor antibody should be determined by the researcher.
- This VWF/von Willebrand factor antibody is recombinantly produced by expression in human HEK293 cells.

Immunogen

A recombinant fragment of human vWF protein (around amino acids 1815-1939) (exact sequence is proprietary) was used as the immunogen for the VWF/von Willebrand factor antibody.

Storage

VWF/von Willebrand factor antibody with sodium azide - store at 2 to 8°C; antibody without sodium azide - store at -20 to -80°C.