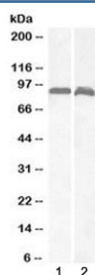


## VPS35 Antibody (R36004)

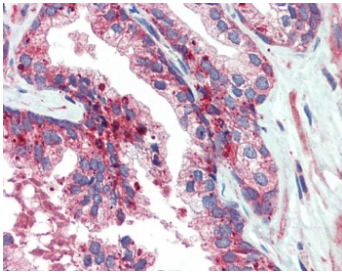
Catalog No.	Formulation	Size
R36004-100UG	0.5 mg/ml in 1X TBS, pH7.3, with 0.5% BSA (US sourced) and 0.02% sodium azide	100 ug

[Bulk quote request](#)

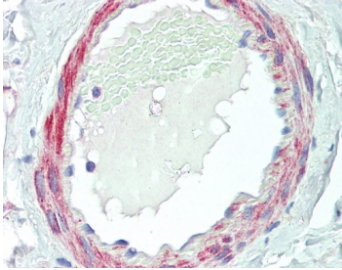
Availability	1-3 business days
Species Reactivity	Human, Rat
Predicted Reactivity	Mouse, Cow
Format	Antigen affinity purified
Host	Goat
Clonality	Polyclonal (goat origin)
Isotype	Goat Ig
Purity	Antigen affinity
Gene ID	55737
Localization	Cytoplasmic
Applications	Western Blot : 0.5-1ug/ml Immunohistochemistry (FFPE) : 5-10ug/ml ELISA (peptide) LOD : 1:8000
Limitations	This VPS35 antibody is available for research use only.



Western blot testing of 1) human brain (cerebellum) and 2) rat brain lysate with VPS35 antibody at 1ug/ml. Predicted molecular weight: ~91 kDa.



IHC testing of FFPE human prostate tissue with VPS35 antibody at 5ug/ml. Required HIER: steamed antigen retrieval with pH6 citrate buffer; AP-staining.



IHC testing of FFPE human small intestine tissue with VPS35 antibody at 5ug/ml. Required HIER: steamed antigen retrieval with pH6 citrate buffer; AP-staining.

## Description

Additional name(s) for this target protein: Vacuolar protein sorting 35, MEM3

## Application Notes

Optimal dilution of the VPS35 antibody should be determined by the researcher.

## Immunogen

Amino acids SPESEGPIYEGIL were used as the immunogen for this VPS35 antibody.

## Storage

Aliquot and store the VPS35 antibody at -20oC.