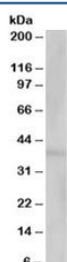


VPS26A Antibody (R36005)

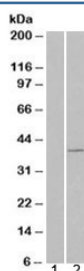
Catalog No.	Formulation	Size
R36005-100UG	0.5 mg/ml in 1X TBS, pH7.3, with 0.5% BSA (US sourced) and 0.02% sodium azide	100 ug

[Bulk quote request](#)

Availability	1-3 business days
Species Reactivity	Human
Predicted Reactivity	Cow, Mouse, Pig, Rat
Format	Antigen affinity purified
Clonality	Polyclonal (goat origin)
Isotype	Goat Ig
Purity	Antigen affinity
Gene ID	9559
Applications	Western Blot : 1-3ug/ml ELISA (peptide) LOD : 1:4000
Limitations	This VPS26A antibody is available for research use only.



Western blot testing of human kidney lysate with VSP26A antibody at 1ug/ml. Predicted molecular weight: ~38kDa.



Western blot of HEK293 lysate overexpressing VPS26A probed with VSP26A antibody (mock transfection in lane 1). Predicted molecular weight: ~38kDa.

Description

Additional name(s) for this target protein: Vacuolar protein sorting 26 homologue A

Application Notes

Optimal dilution of the VPS26A antibody should be determined by the researcher.

1. This VPS26A antibody is specific for isoform 1.

Immunogen

Amino acids SPESQASAEQPEM were used as the immunogen for this VPS26A antibody.

Storage

Aliquot and store the VPS26A antibody at -20oC.