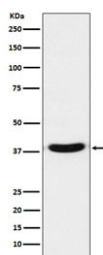


VPS26 Antibody [clone AEEE-22] (RQ4779)

Catalog No.	Formulation	Size
RQ4779	Antibody in PBS with 0.02% sodium azide, 50% glycerol and 0.4-0.5mg/ml BSA	100 ul

[Bulk quote request](#)

Availability	1-2 weeks
Species Reactivity	Human, Mouse, Rat
Format	Purified
Clonality	Rabbit Monoclonal
Isotype	Rabbit IgG
Clone Name	AEEE-22
Purity	Affinity purified
UniProt	O75436
Applications	Western Blot : 1:500-1:2000
Limitations	This VPS26 antibody is available for research use only.



Western blot testing of human A431 cell lysate with VPS26 antibody. Predicted molecular weight ~38 kDa.

Description

'Vacuolar protein sorting-associated protein 26A' is an essential component of the retromer complex, a complex required to retrieve lysosomal enzyme receptors (IGF2R and M6PR) from endosomes to the trans-Golgi network. Also required to regulate transcytosis of the polymeric immunoglobulin receptor (pIgR-pIgA) .

Application Notes

Optimal dilution of the VPS26 antibody should be determined by the researcher.

Immunogen

A synthetic peptide specific to human VPS26 was used as the immunogen for the VPS26 antibody.

Storage

Store the VPS26 antibody at -20oC.