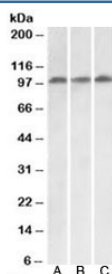


VPS16 Antibody (R34421)

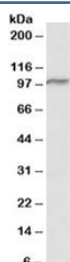
Catalog No.	Formulation	Size
R34421-100UG	0.5 mg/ml in 1X TBS, pH7.3, with 0.5% BSA (US sourced) and 0.02% sodium azide	100 ug

[Bulk quote request](#)

Availability	1-3 business days
Species Reactivity	Human, Mouse, Rat
Predicted Reactivity	Cow, Dog, Pig
Format	Antigen affinity purified
Host	Goat
Clonality	Polyclonal (goat origin)
Isotype	Goat Ig
Purity	Antigen affinity
Gene ID	64601
Applications	Western Blot : 0.1-0.3ug/ml ELISA (peptide) LOD : 1:128000
Limitations	This VPS16 antibody is available for research use only.



Western blot testing of HeLa [A], HepG2 [B] and Jurkat [C] lysates with VPS16 antibody at 0.1ug/ml. Predicted molecular weight: ~95kDa (isoform 1).



Western blot of mouse spleen lysate with VPS16 antibody at 0.1ug/ml. Predicted molecular weight: ~95kDa (isoform 1).

Description

Additional name(s) for this target protein: Vacuolar protein sorting 16

Application Notes

Optimal dilution of the VPS16 antibody should be determined by the researcher.

1. This VPS16 antibody is specific for isoform 1.

Immunogen

Amino acids KESQKADEYLREIQ were used as the immunogen for this VPS16 antibody. This sequence is specific to isoform 1.

Storage

Aliquot and store the VPS16 antibody at -20oC.