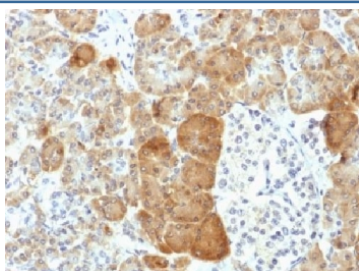


VLDL Receptor Antibody [clone VLDLR/1337] (V3389)

Catalog No.	Formulation	Size
V3389-100UG	0.2 mg/ml in 1X PBS with 0.1 mg/ml BSA (US sourced) and 0.05% sodium azide	100 ug
V3389-20UG	0.2 mg/ml in 1X PBS with 0.1 mg/ml BSA (US sourced) and 0.05% sodium azide	20 ug
V3389SAF-100UG	1 mg/ml in 1X PBS; BSA free, sodium azide free	100 ug

[Bulk quote request](#)

Species Reactivity	Human
Format	Purified
Clonality	Monoclonal (mouse origin)
Isotype	Mouse IgG1, lambda
Clone Name	VLDLR/1337
Purity	Protein G affinity chromatography
UniProt	P98155
Gene ID	7436
Localization	Cytoplasmic
Applications	Immunohistochemistry (FFPE) : 1-2ug/ml for 30 min at RT
Limitations	This VLDL Receptor antibody is available for research use only.



IHC testing of FFPE human pancreas with VLDL Receptor antibody (clone VLDLR/1337). HIER: boil tissue sections in 10mM Tris with 1mM EDTA, pH 9 for 10-20 min followed by cooling at RT for 20 min.

Description

Very Low Density Lipoprotein Receptor (VLDLR/VLDL receptor) is a member of the LDL receptor gene family which includes LDL receptor, LRP, megalin, VLDLR and ApoER2. The LDL receptor family is characterized by a cluster of

cysteine-rich class A repeats, epidermal growth factor (EGF)-like repeats, YWTD repeats and an O-linked sugar domain. VLDLR associates with RAP (receptor associated protein) during receptor folding, and RAP facilitates the secretion of the extracellular region of VLDLR. VLDL receptor is thought to mediate the interaction of extracellular Reelin and cytosolic mDab1 (mammalian disabled protein), which activates a tyrosine kinase. This pathway regulates the migration of neurons along the radial glial fiber network during brain development.

Application Notes

The concentration stated for each application is a general starting point. Variations in protocols, secondaries and substrates may require the VLDL Receptor antibody to be titrated up or down for optimal performance.

Immunogen

A human recombinant partial protein from the C-terminal region was used as the immunogen for this VLDL Receptor antibody.

Storage

Store the VLDL Receptor antibody at 2-8oC (with azide) or aliquot and store at -20oC or colder (without azide).

References (1)