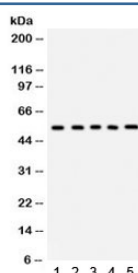


Vitronectin Antibody / VTN (R31877)

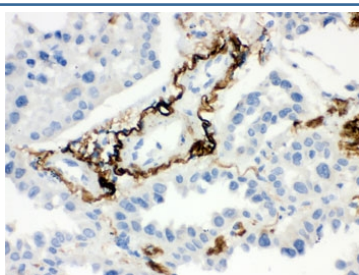
Catalog No.	Formulation	Size
R31877	0.5mg/ml if reconstituted with 0.2ml sterile DI water	100 ug

Bulk quote request

Availability	1-3 business days
Species Reactivity	Human, Mouse, Rat
Format	Antigen affinity purified
Clonality	Polyclonal (rabbit origin)
Isotype	Rabbit IgG
Purity	Antigen affinity
Buffer	Lyophilized from 1X PBS with 2.5% BSA and 0.025% sodium azide
UniProt	P04004
Localization	Cytoplasmic, membrane
Applications	Western Blot : 0.1-0.5ug/ml IHC (FFPE) : 0.5-1ug/ml
Limitations	This Vitronectin antibody is available for research use only.



Western blot testing of 1) rat liver, 2) rat lung, 3) human HepG2, 4) HeLa and 5) mouse HEPA1-6 lysate with Vitronectin antibody. Expected molecular weight: 54-75 kDa depending on glycosylation level.



IHC testing of FFPE human lung cancer tissue with Vitronectin antibody. HIER: Boil the paraffin sections in pH 6, 10mM citrate buffer for 20 minutes and allow to cool prior to staining.

Description

Vitronectin, also known as VTN, is a protein that in humans is encoded by the VTN gene. The protein encoded by this gene is a member of the pexin family. It is found in serum and tissues and promotes cell adhesion and spreading, inhibits the membrane-damaging effect of the terminal cytolytic complement pathway, and binds to several serpin serine protease inhibitors. It is a secreted protein and exists in either a single chain form or a clipped, two chain form held together by a disulfide bond. Also vitronectin serves to regulate proteolysis initiated by plasminogen activation. In addition, vitronectin is a component of platelets and is, thus, involved in hemostasis.

Application Notes

Optimal dilution of the Vitronectin antibody should be determined by the researcher.

Immunogen

Amino acids RVNLRTRRVDTVDPPYPRSIQYWLGC of human Vitronectin were used as the immunogen for the Vitronectin antibody.

Storage

After reconstitution, the Vitronectin antibody can be stored for up to one month at 4°C. For long-term, aliquot and store at -20°C. Avoid repeated freezing and thawing.