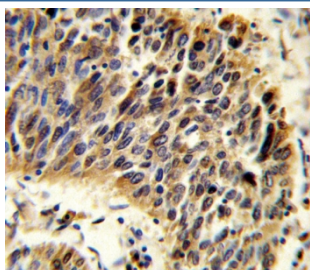


Vitronectin Antibody / VTN (F54930)

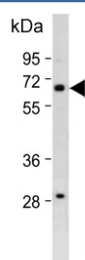
Catalog No.	Formulation	Size
F54930-0.4ML	In 1X PBS, pH 7.4, with 0.09% sodium azide	0.4 ml
F54930-0.08ML	In 1X PBS, pH 7.4, with 0.09% sodium azide	0.08 ml

[Bulk quote request](#)

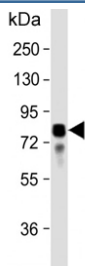
Availability	1-3 business days
Species Reactivity	Human
Format	Purified
Clonality	Polyclonal (rabbit origin)
Isotype	Rabbit IgG
Purity	Antigen affinity purified
UniProt	P04004
Localization	Cytoplasmic, membrane
Applications	Immunohistochemistry (FFPE) : 1:10-1:50 Western Blot : 1:1000-1:2000 Flow Cytometry : 1:25 (1x10 ⁶ cells)
Limitations	This Vitronectin antibody is available for research use only.



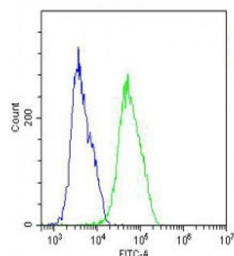
IHC testing of FFPE human lung carcinoma tissue with Vitronectin antibody. HIER: steam section in pH6 citrate buffer for 20 min and allow to cool prior to staining.



Western blot testing of human Caco-2 cell lysate with Vitronectin antibody. Expected molecular weight: 54-75 kDa depending on glycosylation level.



Western blot testing of human plasma lysate with Vitronectin antibody. Expected molecular weight: 54-75 kDa depending on glycosylation level.



Flow cytometry testing of fixed and permeabilized human MCF7 cells with Vitronectin antibody; Blue=isotype control, Green= Vitronectin antibody.

Description

Vitronectin is a member of the pexin family. This protein is found in serum and tissues and promotes cell adhesion and spreading, inhibits the membrane-damaging effect of the terminal cytolytic complement pathway, and binds to several serpin serine protease inhibitors. The protein is a secreted protein and exists in either a single chain form or a clipped, two chain form held together by a disulfide bond.

Application Notes

The stated application concentrations are suggested starting points. Titration of the Vitronectin antibody may be required due to differences in protocols and secondary/substrate sensitivity.

Immunogen

A portion of amino acids 65-93 from the human protein was used as the immunogen for the Vitronectin antibody.

Storage

Aliquot the Vitronectin antibody and store frozen at -20oC or colder. Avoid repeated freeze-thaw cycles.