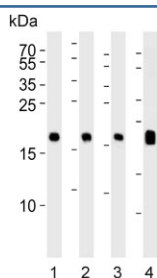


Visinin-like protein 1 Antibody / VILIP1 / VSNL1 (F54503)

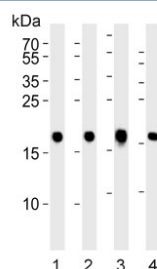
Catalog No.	Formulation	Size
F54503-0.2ML	In 1X PBS, pH 7.4, with 0.09% sodium azide	0.2 ml
F54503-0.05ML	In 1X PBS, pH 7.4, with 0.09% sodium azide	0.05 ml

Bulk quote request

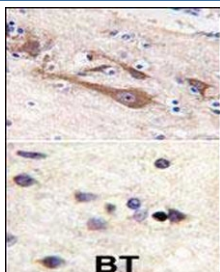
Availability	1-3 business days
Species Reactivity	Human, Mouse, Rat
Format	Purified
Clonality	Polyclonal (rabbit origin)
Isotype	Rabbit IgG
Purity	Antigen affinity purified
UniProt	P62760
Applications	Western Blot : 1:500-1:2000 Immunohistochemistry (FFPE) : 1:25
Limitations	This Visinin-like protein 1 antibody is available for research use only.



Western blot testing of 1) human brain, 2) mouse brain, 3) rat brain and 4) rat eyeball lysate with Visinin-like protein 1 antibody. Predicted molecular weight ~22 kDa.



Western blot testing of 1) human SW480, 2) human brain, 3) mouse brain and 4) rat brain lysate with Visinin-like protein 1 antibody. Predicted molecular weight ~22 kDa.



IHC testing of FFPE human brain tissue with (top) and without (bottom) Visinin-like protein 1 antibody. HIER: steam section in pH6 citrate buffer for 20 min and allow to cool prior to staining.

Description

The visinin and visinin-like peptides represent a family of calcium-binding proteins that are highly expressed in the retina. Visinin has been shown to be a cone cell-specific protein with a molecular weight of 24 kDa. Several members of the visinin family of genes have been isolated and characterized from different species. These peptides are believed to be involved in the processes of phototransduction. The recoverin gene (RCV1) is believed to be involved in the pathophysiology of retinopathy in cancer patients.

Application Notes

The stated application concentrations are suggested starting points. Titration of the Visinin-like protein 1 antibody may be required due to differences in protocols and secondary/substrate sensitivity.

Immunogen

A portion of amino acids 123-150 from the human protein was used as the immunogen for the Visinin-like protein 1 antibody.

Storage

Aliquot the Visinin-like protein 1 antibody and store frozen at -20oC or colder. Avoid repeated freeze-thaw cycles.