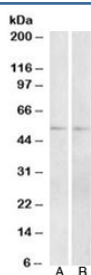


Vipr1 Antibody (R35350)

Catalog No.	Formulation	Size
R35350-100UG	0.5 mg/ml in 1X TBS, pH7.3, with 0.5% BSA (US sourced) and 0.02% sodium azide	100 ug

[Bulk quote request](#)

Availability	1-3 business days
Species Reactivity	Mouse, Rat
Format	Antigen affinity purified
Clonality	Polyclonal (goat origin)
Isotype	Goat Ig
Purity	Antigen affinity
Gene ID	22354
Applications	Western Blot : 1-3ug/ml ELISA (peptide) LOD : 1:1000
Limitations	This Vipr1 antibody is available for research use only.



Western blot testing of A) mouse and B) rat small intestine lysate with Vipr1 antibody at 2ug/ml. Predicted/observed molecular weight: ~52 kDa.

Description

Additional name(s) for this target protein: Vasoactive intestinal peptide receptor 1

Application Notes

Optimal dilution of the Vipr1 antibody should be determined by the researcher.

Immunogen

Amino acids QLFSPHGYNISRN were used as the immunogen for this Vipr1 antibody.

Storage

Aliquot and store the Vipr1 antibody at -20oC.