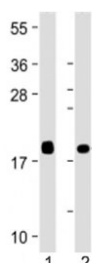


VILIP1 Antibody / Visinin-like protein 1 / VSNL1 [clone 1831CT148.68.34] (F54108)

Catalog No.	Formulation	Size
F54108-0.2ML	In 1X PBS, pH 7.4, with 0.09% sodium azide	0.2 ml
F54108-0.05ML	In 1X PBS, pH 7.4, with 0.09% sodium azide	0.05 ml

[Bulk quote request](#)

Availability	1-3 business days
Species Reactivity	Human
Predicted Reactivity	Mouse, Rat, Bovine, Chicken
Format	Purified
Clonality	Monoclonal
Isotype	Mouse IgG1, kappa
Clone Name	1831CT148.68.34
Purity	Protein G purified
UniProt	P62760
Applications	Western Blot : 1:4000
Limitations	This VILIP1 antibody is available for research use only.



Western blot testing of VILIP1 antibody at 1:4000: Lane 1) human brain and 2) human cerebellum lysate. Predicted molecular weight ~22 kDa.

Description

Regulates (in vitro) the inhibition of rhodopsin phosphorylation in a calcium-dependent manner. [UniProt]

Application Notes

The stated application concentrations are suggested starting points. Titration of the VILIP1 antibody may be required due

to differences in protocols and secondary/substrate sensitivity.

Immunogen

Recombinant human VILIP1 was used as the immunogen for the VILIP1 antibody.

Storage

Aliquot the VILIP1 antibody and store frozen at -20oC or colder. Avoid repeated freeze-thaw cycles.