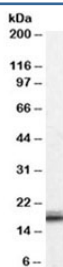


## VHL Antibody (R35773)

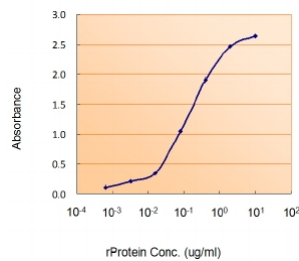
Catalog No.	Formulation	Size
R35773-100UG	0.5 mg/ml in 1X TBS, pH7.3, with 0.5% BSA (US sourced) and 0.02% sodium azide	100 ug

[Bulk quote request](#)

Availability	1-3 business days
Species Reactivity	Human, Mouse, Rat
Predicted Reactivity	Dog
Format	Antigen affinity purified
Host	Goat
Clonality	Polyclonal (goat origin)
Isotype	Goat Ig
Purity	Antigen affinity
Gene ID	7428
Applications	Western Blot : 0.01-0.03ug/ml Enzyme ImmunoAssay : binds recombinant protein (use at 1.5-3ug/ml) ELISA (peptide) LOD : 1:128000
Limitations	This VHL antibody is available for research use only.



Western blot testing of human ovary lysate with VHL antibody at 0.01ug/ml. Predicted molecular weight ~23/19kDa (Isoforms 1/2).



Sandwich ELISA using the VHL antibody at 1.5ug/ml as the detect.

## Description

Additional name(s) for this target protein: Von Hippel-Lindau tumor suppressor, VHL1

## Application Notes

Optimal dilution of the VHL antibody should be determined by the researcher.

1. Isoforms 1 (213 AA) and 2 (172 AA) may be detected with this Ab.

## Immunogen

Amino acids RSLVKPENYRRRLD were used as the immunogen for this VHL antibody.

## Storage

Aliquot and store the VHL antibody at -20oC.