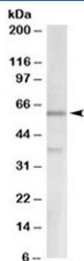


VGLUT2 Antibody (Center Region) (R33727)

Catalog No.	Formulation	Size
R33727-100UG	0.5 mg/ml in 1X TBS, pH7.3, with 0.5% BSA (US sourced) and 0.02% sodium azide	100 ug

[Bulk quote request](#)

Availability	1-3 business days
Species Reactivity	Human
Predicted Reactivity	Cow, Dog, Mouse, Pig, Rat
Format	Antigen affinity purified
Host	Goat
Clonality	Polyclonal (goat origin)
Isotype	Goat Ig
Purity	Antigen affinity
Gene ID	57084
Applications	Western Blot : 2-5ug/ml ELISA (peptide) LOD : 1:2000
Limitations	This VGLUT2 antibody is available for research use only.



Western blot testing of human cerebellum lysate with VGLUT2 antibody at 2ug/ml. Molecular weight: the expected ~60 kDa band and the additional ~37 kDa band are both blocked by the immunizing peptide.

Description

Additional name(s) for this target protein: Vesicular glutamate transporter type 2; solute carrier family 17 (sodium-dependent inorganic phosphate cotransporter), member 6; SLC17A6

Application Notes

Optimal dilution of the VGLUT2 antibody should be determined by the researcher.

Immunogen

Amino acids EDELDEETGDITQN were used as the immunogen for this VGLUT2 antibody.

Storage

Aliquot and store the VGLUT2 antibody at -20oC.