

## VEGFR2 Antibody (R31095)

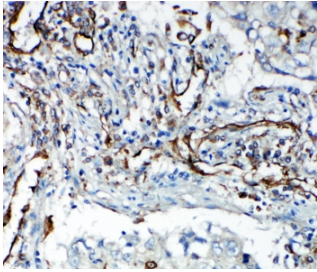
Catalog No.	Formulation	Size
R31095	0.5mg/ml if reconstituted with 0.2ml sterile DI water	100 ug

[Bulk quote request](#)

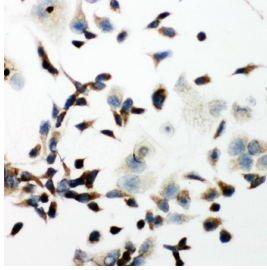
<b>Availability</b>	1-3 business days
<b>Species Reactivity</b>	Human
<b>Format</b>	Antigen affinity purified
<b>Host</b>	Rabbit
<b>Clonality</b>	Polyclonal (rabbit origin)
<b>Isotype</b>	Rabbit IgG
<b>Purity</b>	Antigen affinity
<b>Buffer</b>	Lyophilized from 1X PBS with 2% Trehalose and 0.025% sodium azide
<b>UniProt</b>	P35968
<b>Localization</b>	Cytoplasmic and cell surface
<b>Applications</b>	Western Blot : 0.5-1ug/ml Immunohistochemistry (FFPE) : 0.5-1ug/ml Immunohistochemistry (Frozen) : 0.5-1ug/ml Immunocytochemistry : 0.5-1ug/ml
<b>Limitations</b>	This VEGFR2 antibody is available for research use only.



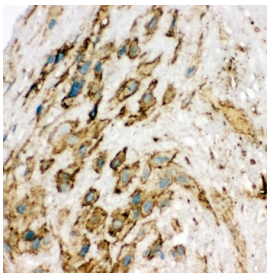
Western blot testing with VEGFR2 antibody and SMMC-7721 lysate. Predicted molecular weight: ~152 (immature), 180-200 kDa (intermediate) and 220-230 kDa (mature).



IHC-P: VEGFR2 antibody testing of human lung cancer tissue



ICC testing of VEGFR2 antibody and HeLa cells



IHC-F testing of VEGFR2 antibody and human placenta tissue

## Description

KDR (Kinase Insert Domain Receptor), also known as FLK1, VEGFR 2 or VEGFR2, is a VEGF receptor. KDR is the human gene encoding it. Sait et al.(1995) likewise corrected the assignment to chromosome 4q11-q12 to the same region occupied also by PDGFRA and KIT, thus indicating the location of a cluster of receptor tyrosine kinase genes. Vascular endothelial growth factor(VEGF) is the only mitogen that specifically acts on endothelial cells. Its expression is upregulated by hypoxia, and its cell-surface receptor, known as fetal liver kinase-1(Flk1) in mouse, is exclusively expressed in endothelial cells(Plate et al., 1993). Flk1 is the mouse homolog of KDR(Matthews et al., 1991).

## Application Notes

The stated application concentrations are suggested starting points. Titration of the VEGFR2 antibody may be required due to differences in protocols and secondary/substrate sensitivity.

## Immunogen

An amino acid sequence from the middle region of human VEGF Receptor 2 (HHIHWYWQLEEEECANE) was used as the immunogen for this VEGFR2 antibody.

## Storage

After reconstitution, the VEGFR2 antibody can be stored for up to one month at 4oC. For long-term, aliquot and store at -20oC. Avoid repeated freezing and thawing.

