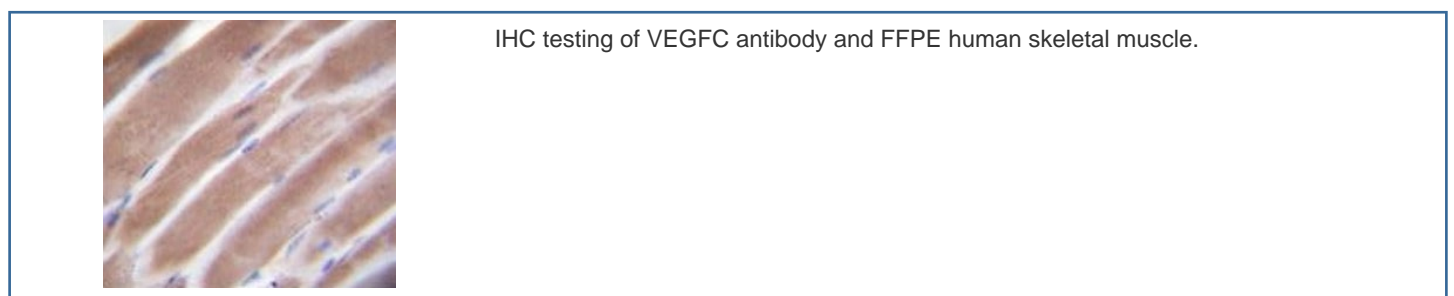
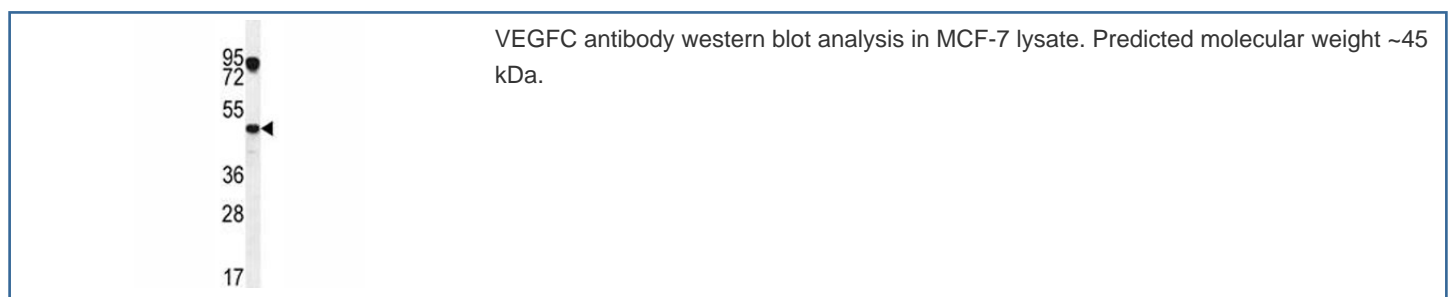


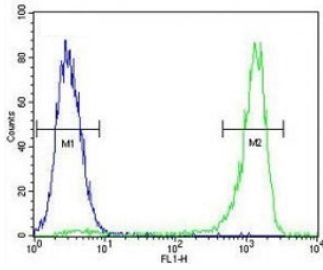
## VEGFC Antibody (F41806)

Catalog No.	Formulation	Size
F41806-0.4ML	In 1X PBS, pH 7.4, with 0.09% sodium azide	0.4 ml
F41806-0.08ML	In 1X PBS, pH 7.4, with 0.09% sodium azide	0.08 ml

[Bulk quote request](#)

<b>Availability</b>	1-3 business days
<b>Species Reactivity</b>	Human
<b>Format</b>	Antigen affinity purified
<b>Clonality</b>	Polyclonal (rabbit origin)
<b>Isotype</b>	Rabbit Ig
<b>Purity</b>	Antigen affinity
<b>UniProt</b>	P49767
<b>Applications</b>	Western Blot : 1:1000 IHC (Paraffin) : 1:50-1:100 Flow Cytometry : 1:10-1:50
<b>Limitations</b>	This VEGFC antibody is available for research use only.





VEGFC antibody flow cytometric analysis of MCF-7 cells (green) compared to a [negative control](http://search_result.php?search_txt=n1001) (blue). FITC-conjugated goat-anti-rabbit secondary Ab was used for the analysis.

## Description

Growth factor active in angiogenesis, and endothelial cell growth, stimulating their proliferation and migration and also has effects on the permeability of blood vessels. May function in angiogenesis of the venous and lymphatic vascular systems during embryogenesis, and also in the maintenance of differentiated lymphatic endothelium in adults. Binds and activates VEGFR-2 (KDR/FLK1) and VEGFR-3 (FLT4) receptors. [UniProt]

## Application Notes

Titration of the VEGFC antibody may be required due to differences in protocols and secondary/substrate sensitivity.

## Immunogen

A portion of amino acids 20-49 from the human protein was used as the immunogen for this VEGFC antibody.

## Storage

Aliquot the VEGFC antibody and store frozen at -20oC or colder. Avoid repeated freeze-thaw cycles.