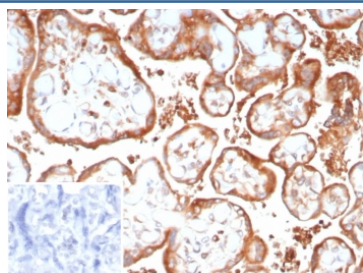


VEGFA Antibody / Vascular Endothelial Growth Factor A [clone VEGF/9366] (V5806)

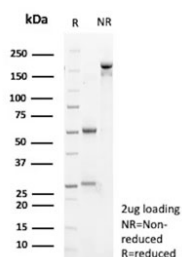
Catalog No.	Formulation	Size
V5806-100UG	0.2 mg/ml in 1X PBS with 0.1 mg/ml BSA (US sourced), 0.05% sodium azide	100 ug
V5806-20UG	0.2 mg/ml in 1X PBS with 0.1 mg/ml BSA (US sourced), 0.05% sodium azide	20 ug
V5806SAF-100UG	1 mg/ml in 1X PBS; BSA free, sodium azide free	100 ug

[Bulk quote request](#)

Availability	1-3 business days
Species Reactivity	Human
Format	Purified
Host	Mouse
Clonality	Monoclonal (mouse origin)
Isotype	Mouse IgG2, kappa
Clone Name	VEGF/9366
Purity	Protein G affinity
UniProt	P15692
Localization	Cytoplasmic, cell surface and extracellular (secreted)
Applications	Immunohistochemistry (FFPE) : 1-2ug/ml
Limitations	This VEGFA antibody is available for research use only.



IHC staining of FFPE human placenta tissue with VEGFA antibody (clone VEGF/9366). Inset: PBS used in place of primary Ab (secondary Ab negative control). HIER: boil tissue sections in pH 9 10mM Tris with 1mM EDTA for 20 min and allow to cool before testing.



SDS-PAGE analysis of purified, BSA-free VEGFA antibody (clone VEGF/9366) as confirmation of integrity and purity.

Description

This MAb recognizes proteins of 19-22kDa (reducing) and 38kDa-44kDa (non-reducing), identified as various isoforms of Vascular Endothelial Growth Factor or Vascular Permeability Factor (VEGF/VPF). It is highly specific to VEGF, which is a homodimeric, disulfide-linked glycoprotein with a close homology to platelet derived growth factor (PDGF). There are multiple isoforms of VEGF containing 206-, 189-, 165-, and 121-amino acid residues. The smaller two isoforms, VEGF165 and VEGF121, are secreted proteins and act as diffusible agents, whereas the larger two remain cell associated. VEGF/VPF plays an important role in angiogenesis, which promotes tumor progression and metastasis.

Application Notes

Optimal dilution of the VEGFA antibody should be determined by the researcher.

Immunogen

A portion of amino acids 1-200 from human VEGF protein was used as the immunogen for the VEGFA antibody.

Storage

Aliquot the VEGFA antibody and store frozen at -20oC or colder. Avoid repeated freeze-thaw cycles.