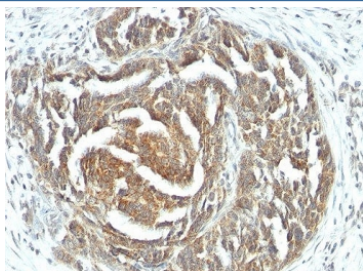


## VEGF Antibody / VEGFA [clone VEGF/1063] (V2925)

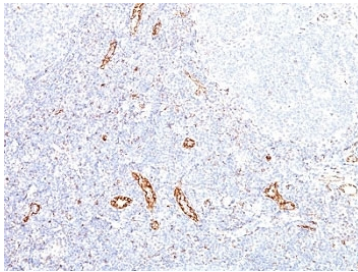
| Catalog No.    | Formulation  | Size   |
|----------------|--|--------|
| V2925-100UG    | 0.2 mg/ml in 1X PBS with 0.1 mg/ml BSA (US sourced) and 0.05% sodium azide | 100 ug |
| V2925-20UG     | 0.2 mg/ml in 1X PBS with 0.1 mg/ml BSA (US sourced) and 0.05% sodium azide | 20 ug  |
| V2925SAF-100UG | 1 mg/ml in 1X PBS; BSA free, sodium azide free                             | 100 ug |

**Bulk quote request**

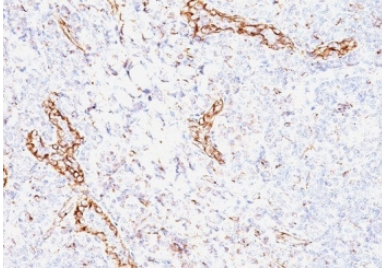
|                           |   |
|---------------------------|---|
| <b>Availability</b>       | 1-3 business days                                       |
| <b>Species Reactivity</b> | Human   |
| <b>Format</b>             | Purified  |
| <b>Clonality</b>          | Monoclonal (mouse origin)                               |
| <b>Isotype</b>            | Mouse IgG1, kappa                                       |
| <b>Clone Name</b>         | VEGF/1063   |
| <b>Purity</b>             | Protein G affinity chromatography                       |
| <b>UniProt</b>            | P15692  |
| <b>Localization</b>       | Cytoplasmic, cell surface and extracellular (secreted)  |
| <b>Applications</b>       | Immunohistochemistry (FFPE) : 1-2ug/ml for 30 min at RT |
| <b>Limitations</b>        | This VEGF antibody is available for research use only.  |



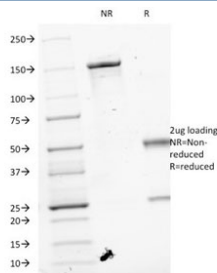
IHC: Formalin-fixed, paraffin-embedded human ovarian carcinoma stained with VEGF antibody (clone VEGF/1063).



IHC: Formalin-fixed, paraffin-embedded human tonsil stained with VEGF antibody (clone VEGF/1063).



IHC: Formalin-fixed, paraffin-embedded human tonsil stained with VEGF antibody (clone VEGF/1063).



SDS-PAGE Analysis of Purified, BSA-Free VEGF Antibody (clone VEGF/1063). Confirmation of Integrity and Purity of the Antibody.

## Description

This mAb recognizes proteins of 19-22kDa (reducing) and 38kDa-44kDa (non-reducing), identified as various isoforms of Vascular Endothelial Growth Factor or Vascular Permeability Factor (VEGF/VPF). It is highly specific to VEGF, which is a homodimeric, disulfide-linked glycoprotein with a close homology to platelet derived growth factor (PDGF). There are multiple isoforms of VEGF containing 206-, 189-, 165-, and 121-amino acid residues. The smaller two isoforms, VEGF165 and VEGF121, are secreted proteins and act as diffusible agents, whereas the larger two remain cell associated. VEGF/VPF plays an important role in angiogenesis, which promotes tumor progression and metastasis.

## Application Notes

Optimal dilution of the VEGF antibody should be determined by the researcher.

1. Staining of formalin-fixed tissues requires boiling tissue sections in 10mM Tris with 1mM EDTA, pH 8, for 10-20 min followed by cooling at RT for 20 min.

## Immunogen

Human recombinant protein was used as the immunogen for the VEGF antibody.

## Storage

Store the VEGF antibody at 2-8°C (with azide) or aliquot and store at -20°C or colder (without azide).

