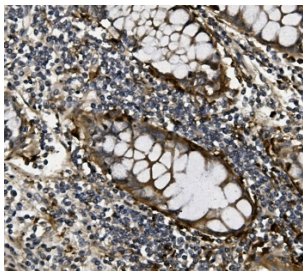


## VEGF Antibody / VEGFA (R31500)

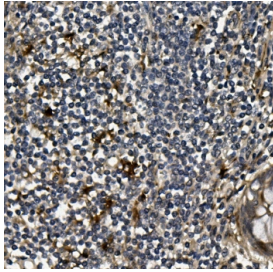
Catalog No.	Formulation	Size
R31500	0.5mg/ml if reconstituted with 0.2ml sterile DI water	100 ug

### Bulk quote request

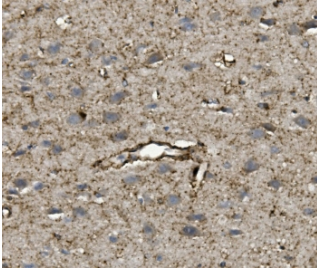
<b>Availability</b>	1-3 business days
<b>Species Reactivity</b>	Human, Mouse, Rat
<b>Format</b>	Antigen affinity purified
<b>Host</b>	Rabbit
<b>Clonality</b>	Polyclonal (rabbit origin)
<b>Isotype</b>	Rabbit IgG
<b>Purity</b>	Antigen affinity
<b>Buffer</b>	Lyophilized from 1X PBS with 2% Trehalose
<b>Gene ID</b>	7422
<b>Localization</b>	Cytoplasmic, cell surface and extracellular (secreted)
<b>Applications</b>	Western Blot : 0.5-1ug/ml Immunohistochemistry (FFPE) : 2-5ug/ml Flow Cytometry : 1-3ug/million cells
<b>Limitations</b>	This VEGF antibody is available for research use only.



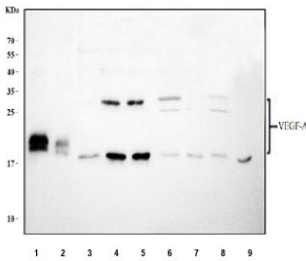
IHC staining of FFPE human rectal cancer with VEGF antibody. HIER: boil tissue sections in pH6, 10mM citrate buffer, for 20 min and allow to cool before testing.



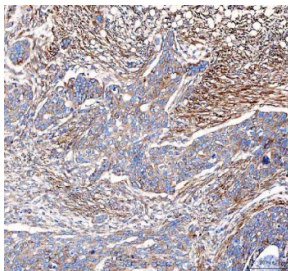
IHC staining of FFPE human rectal cancer with VEGF antibody. HIER: boil tissue sections in pH6, 10mM citrate buffer, for 20 min and allow to cool before testing.



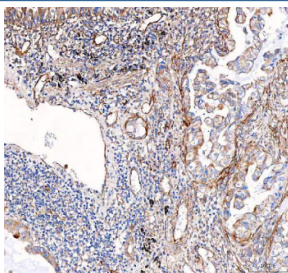
IHC staining of FFPE rat brain with VEGF antibody. HIER: boil tissue sections in pH6, 10mM citrate buffer, for 20 min and allow to cool before testing.



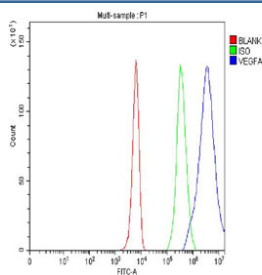
Western blot testing of 1) 20ng/lane recombinant protein, 2) 10ng/lane recombinant protein, 3) human U-87 MG, 4) human K562, 5) human U-251, 6) rat brain, 7) rat C6, 8) mouse brain and 9) mouse Neuro-2a cell lysate with VEGF antibody. Predicted molecular weight 19~22 kDa (monomer) and 38~44 kDa (dimer).



IHC staining of FFPE human ovarian serous adenocarcinoma tissue with VEGF antibody. HIER: boil tissue sections in pH8 EDTA for 20 min and allow to cool before testing.



IHC staining of FFPE human lung cancer tissue with VEGF antibody. HIER: boil tissue sections in pH8 EDTA for 20 min and allow to cool before testing.



Flow cytometry testing of fixed human K562 cells with VEGF antibody at 1ug/million cells (blocked with goat sera); Red=cells alone, Green=isotype control, Blue= VEGF antibody.

## Description

VEGF is the only mitogen that specifically acts on endothelial cells. It may be a major regulator of tumor angiogenesis in vivo. It is structurally related to platelet-derived growth factor. VEGF shares homology with the PDGF A chain and B chain, including conservation of all 8 cysteines found in PDGFA and PDGFB. VEGF gene contains 8 exons. VEGF induces remodeling and enhances TH2-mediated sensitization and inflammation in the lung. And this gene also can regulate haematopoietic stem cell survival by an internal autocrine loop mechanism. What's more, it also stimulates neurogenesis in vitro and in vivo.

## Application Notes

The stated application concentrations are suggested starting points. Titration of the VEGF antibody may be required due to differences in protocols and secondary/substrate sensitivity.

## Immunogen

Human recombinant protein, A isoform (AA 27-191) was used as the immunogen for this VEGF antibody.

## Storage

After reconstitution, the VEGF antibody can be stored for up to one month at 4oC. For long-term, aliquot and store at -20oC. Avoid repeated freezing and thawing.