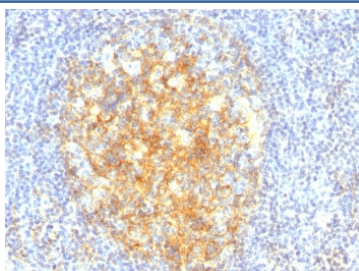


## VCAM1 Antibody [clone VCAM1/843] (V2923)

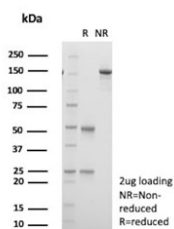
Catalog No.	Formulation	Size
V2923-100UG	0.2 mg/ml in 1X PBS with 0.1 mg/ml BSA (US sourced) and 0.05% sodium azide	100 ug
V2923-20UG	0.2 mg/ml in 1X PBS with 0.1 mg/ml BSA (US sourced) and 0.05% sodium azide	20 ug
V2923SAF-100UG	1 mg/ml in 1X PBS; BSA free, sodium azide free	100 ug
V2923IHC-7ML	Prediluted in 1X PBS with 0.1 mg/ml BSA (US sourced) and 0.05% sodium azide; *For IHC use only*	7 ml

[Bulk quote request](#)

<b>Availability</b>	1-3 business days
<b>Species Reactivity</b>	Human
<b>Format</b>	Purified
<b>Host</b>	Mouse
<b>Clonality</b>	Monoclonal (mouse origin)
<b>Isotype</b>	Mouse IgG1, kappa
<b>Clone Name</b>	VCAM1/843
<b>Purity</b>	Protein G affinity chromatography
<b>UniProt</b>	P19320
<b>Localization</b>	Cytoplasmic, membrane
<b>Applications</b>	Immunohistochemistry (FFPE) : 0.5-1ug/ml for 30 min at RT
<b>Limitations</b>	This VCAM1 antibody is available for research use only.



IHC: Formalin-fixed, paraffin-embedded human tonsil stained with VCAM1 antibody (VCAM1/843).



SDS-PAGE analysis of purified, BSA-free VCAM1 antibody (clone VCAM1/843) as confirmation of integrity and purity.

## Description

Recognizes a protein of 110kDa, identified as CD106 (also known as vascular cell adhesion molecule-1 (VCAM-1), L1CAM and INCAM-100). It is a member of the Ig superfamily of adhesion molecules and is expressed at high levels on cytokine stimulated vascular endothelial cells, and at minimal levels on un-stimulated endothelial cells. It is also present on follicular and inter-follicular dendritic cells of lymph nodes, myoblasts, and some macrophages. VCAM1 serves as a ligand for leukocyte integrin (VLA-4 or CD49d/CD29) and mediates cell adhesion of leukocytes to activated endothelium. It plays a role in various immunological and inflammatory responses.

## Application Notes

Optimal dilution of the VCAM1 antibody should be determined by the researcher.

1. Staining of formalin-fixed tissues requires boiling tissue sections in 10mM Tris with 1mM EDTA, pH 9.0, for 10-20 min followed by cooling at RT for 20 min.
2. The prediluted format is supplied in a dropper bottle and is optimized for use in IHC. After epitope retrieval step (if required), drip mAb solution onto the tissue section and incubate at RT for 30 min.

## Immunogen

Recombinant human protein was used as the immunogen for the VCAM1 antibody.

## Storage

Store the VCAM1 antibody at 2-8oC (with azide) or aliquot and store at -20oC or colder (without azide).