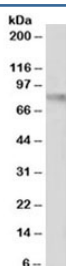


VCAM Antibody (R36259)

Catalog No.	Formulation	Size
R36259-100UG	0.5 mg/ml in 1X TBS, pH7.3, with 0.5% BSA (US sourced) and 0.02% sodium azide	100 ug

[Bulk quote request](#)

Availability	1-3 business days
Species Reactivity	Human
Format	Antigen affinity purified
Clonality	Polyclonal (goat origin)
Isotype	Goat Ig
Purity	Antigen affinity
Gene ID	7412
Applications	Western Blot : 1-3ug/ml ELISA (peptide) LOD : 1:64000
Limitations	This VCAM antibody is available for research use only.



Western blot testing of human uterus lysate with VCAM antibody at 1ug/ml. Expected molecular weight: 74-80 kDa (unmodified), 100-110 kDa (glycosylated).

Description

Additional name(s) for this target protein: Vascular cell adhesion molecule 1; VCAM1

Application Notes

Optimal dilution of the VCAM antibody should be determined by the researcher.

1. This VCAM antibody is specific for isoforms a and c.

Immunogen

Amino acids TQIDSPLSGKVRSE were used as the immunogen for this VCAM antibody.

Storage

Aliquot and store the VCAM antibody at -20oC.