

VCAM-1 Antibody [clone 1.4C3] (V2922)

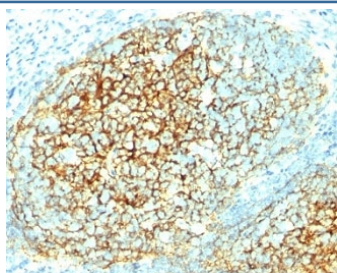
Catalog No.	Formulation	Size
V2922-100UG	0.2 mg/ml in 1X PBS with 0.1 mg/ml BSA (US sourced) and 0.05% sodium azide	100 ug
V2922-20UG	0.2 mg/ml in 1X PBS with 0.1 mg/ml BSA (US sourced) and 0.05% sodium azide	20 ug
V2922SAF-100UG	1 mg/ml in 1X PBS; BSA free, sodium azide free	100 ug
V2922IHC-7ML	Prediluted in 1X PBS with 0.1 mg/ml BSA (US sourced) and 0.05% sodium azide; *For IHC use only*	7 ml



Citations (10)

[Bulk quote request](#)

Availability	1-3 business days
Species Reactivity	Human
Format	Purified
Clonality	Monoclonal (mouse origin)
Isotype	Mouse IgG1, kappa
Clone Name	1.4C3
Purity	Protein G affinity chromatography
UniProt	P19320
Localization	Cytoplasmic, membrane
Applications	Flow Cytometry : 1-2ug/10 ⁶ cells Immunofluorescence : 1-2ug/ml Immunohistochemistry (FFPE) : 1-2ug/ml for 30 min at RT
Limitations	This VCAM-1 antibody is available for research use only.



IHC analysis of formalin-fixed, paraffin-embedded human tonsil stained with VCAM-1 antibody (clone 1.4C3).

Description

Recognizes a protein of 110kDa, identified as CD106 (also known as vascular cell adhesion molecule-1 (VCAM-1), L1CAM and INCAM-100). It is a member of the Ig superfamily of adhesion molecules and is expressed at high levels on cytokine stimulated vascular endothelial cells, and at minimal levels on un-stimulated endothelial cells. It is also present on follicular and inter-follicular dendritic cells of lymph nodes, myoblasts, and some macrophages. VCAM-1 serves as a ligand for leukocyte integrin (VLA-4 or CD49d/CD29) and mediates cell adhesion of leukocytes to activated endothelium. It plays a role in various immunological and inflammatory responses.

Application Notes

Optimal dilution of the VCAM-1 antibody should be determined by the researcher.

1. Staining of formalin-fixed tissues requires boiling tissue sections in 10mM Tris with 1mM EDTA, pH 9.0, for 10-20 min followed by cooling at RT for 20 min.
2. The prediluted format is supplied in a dropper bottle and is optimized for use in IHC. After epitope retrieval step (if required), drip mAb solution onto the tissue section and incubate at RT for 30 min.

Immunogen

Stimulated human umbilical vein endothelial cells (HUVEC) were used as the immunogen for the VCAM-1 antibody.

Storage

Store the VCAM-1 antibody at 2-8oC (with azide) or aliquot and store at -20oC or colder (without azide).