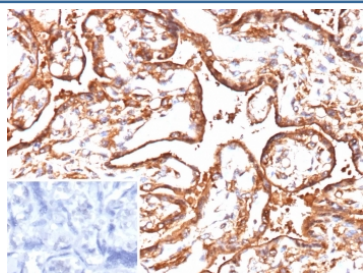


## Vascular Endothelial Growth Factor A Antibody / VEGFA [clone VEGF/9368] (V5807)

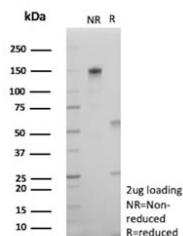
Catalog No.	Formulation	Size
V5807-100UG	0.2 mg/ml in 1X PBS with 0.1 mg/ml BSA (US sourced), 0.05% sodium azide	100 ug
V5807-20UG	0.2 mg/ml in 1X PBS with 0.1 mg/ml BSA (US sourced), 0.05% sodium azide	20 ug
V5807SAF-100UG	1 mg/ml in 1X PBS; BSA free, sodium azide free	100 ug

[Bulk quote request](#)

<b>Availability</b>	1-3 business days
<b>Species Reactivity</b>	Human
<b>Format</b>	Purified
<b>Clonality</b>	Monoclonal (mouse origin)
<b>Isotype</b>	Mouse IgG2, kappa
<b>Clone Name</b>	VEGF/9368
<b>Purity</b>	Protein G affinity
<b>UniProt</b>	P15692
<b>Localization</b>	Cytoplasmic, cell surface and extracellular (secreted)
<b>Applications</b>	Immunohistochemistry (FFPE) : 1-2ug/ml
<b>Limitations</b>	This Vascular Endothelial Growth Factor A antibody is available for research use only.



IHC staining of FFPE human placenta tissue with VEGFA antibody (clone VEGF/9368). Inset: PBS used in place of primary Ab (secondary Ab negative control). HIER: boil tissue sections in pH 9 10mM Tris with 1mM EDTA for 20 min and allow to cool before testing.



SDS-PAGE analysis of purified, BSA-free VEGFA antibody (clone VEGF/9368) as confirmation of integrity and purity.

## Description

This MAb recognizes proteins of 19-22kDa (reducing) and 38kDa-44kDa (non-reducing), identified as various isoforms of Vascular Endothelial Growth Factor or Vascular Permeability Factor (VEGF/VPF). It is highly specific to VEGF, which is a homodimeric, disulfide-linked glycoprotein with a close homology to platelet derived growth factor (PDGF). There are multiple isoforms of VEGF containing 206-, 189-, 165-, and 121-amino acid residues. The smaller two isoforms, VEGF165 and VEGF121, are secreted proteins and act as diffusible agents, whereas the larger two remain cell associated. VEGF/VPF plays an important role in angiogenesis, which promotes tumor progression and metastasis.

## Application Notes

Optimal dilution of the Vascular Endothelial Growth Factor A antibody should be determined by the researcher.

## Immunogen

Human VEGF189 recombinant protein was used as the immunogen for the Vascular Endothelial Growth Factor A antibody.

## Storage

Aliquot the Vascular Endothelial Growth Factor A antibody and store frozen at -20oC or colder. Avoid repeated freeze-thaw cycles.