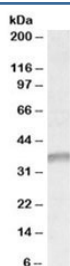


UTF1 Antibody (R35159)

Catalog No.	Formulation	Size
R35159-100UG	0.5 mg/ml in 1X TBS, pH7.3, with 0.5% BSA (US sourced) and 0.02% sodium azide	100 ug

[Bulk quote request](#)

Availability	1-3 business days
Species Reactivity	Human
Format	Antigen affinity purified
Clonality	Polyclonal (goat origin)
Isotype	Goat Ig
Purity	Antigen affinity
Gene ID	8433
Applications	Western Blot : 1-3ug/ml ELISA (peptide) LOD : 1:32000
Limitations	This UTF1 antibody is available for research use only.



Western blot testing of K562 lysate with UTF1 antibody at 1ug/ml. Predicted molecular weight: 36 kDa, commonly observed molecular weight: 36-48 kDa.

Description

Additional name(s) for this target protein: Undifferentiated embryonic cell transcription factor 1

Application Notes

Optimal dilution of the UTF1 antibody should be determined by the researcher.

Immunogen

Amino acids PSPPKSADASPAP were used as the immunogen for this UTF1 antibody.

Storage

Aliquot and store the UTF1 antibody at -20oC.