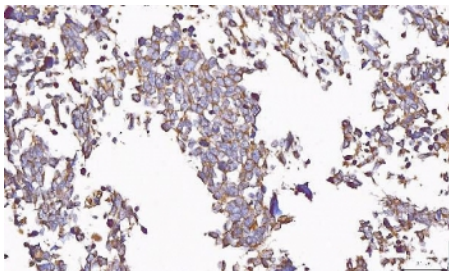


## Uridylate-specific endoribonuclease Antibody / PP11 / ENDOU (RQ6982)

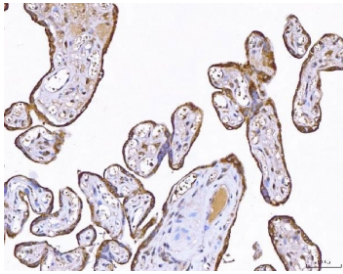
| Catalog No. | Formulation   | Size   |
|-------------|---|--------|
| RQ6982      | 0.5mg/ml if reconstituted with 0.2ml sterile DI water | 100 ug |

### Bulk quote request

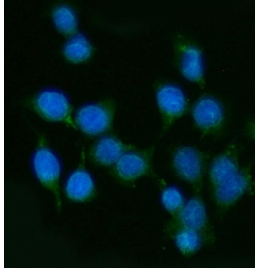
|                           |  |
|---------------------------|--|
| <b>Availability</b>       | 1-3 business days  |
| <b>Species Reactivity</b> | Human  |
| <b>Format</b>             | Antigen affinity purified  |
| <b>Host</b>               | Rabbit   |
| <b>Clonality</b>          | Polyclonal (rabbit origin)   |
| <b>Isotype</b>            | Rabbit IgG   |
| <b>Purity</b>             | Antigen affinity purified  |
| <b>Buffer</b>             | Lyophilized from 1X PBS with 2% Trehalose  |
| <b>UniProt</b>            | P21128   |
| <b>Applications</b>       | Western Blot : 0.5-1 ug/ml<br>Immunohistochemistry (FFPE) : 2-5ug/ml<br>Immunofluorescence : 5ug/ml<br>Flow Cytometry : 1-3ug/million cells<br>Direct ELISA : 0.1-0.5ug/ml |
| <b>Limitations</b>        | This Uridylate-specific endoribonuclease antibody is available for research use only.  |



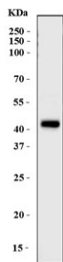
IHC staining of FFPE human lung cancer tissue with Uridylate-specific endoribonuclease antibody. HIER: boil tissue sections in pH8 EDTA for 20 min and allow to cool before testing.



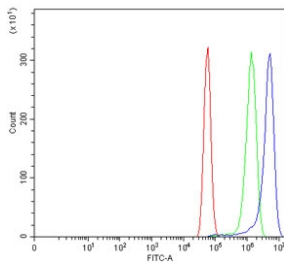
IHC staining of FFPE human placental tissue with Uridylate-specific endoribonuclease antibody. HIER: boil tissue sections in pH8 EDTA for 20 min and allow to cool before testing.



Immunofluorescent staining of FFPE human Caco-2 cells with Uridylate-specific endoribonuclease antibody (green) and DAPI nuclear stain (blue). HIER: steam section in pH6 citrate buffer for 20 min.



Western blot testing of human placental tissue with Uridylate-specific endoribonuclease antibody. Predicted molecular weight ~47 kDa.



Flow cytometry testing of human U-87 MG cells with Uridylate-specific endoribonuclease antibody at 1ug/million cells (blocked with goat sera); Red=cells alone, Green=isotype control, Blue= Uridylate-specific endoribonuclease antibody.

## Description

Endonuclease, poly(U) specific is a protein that in humans is encoded by the ENDOU gene. This gene encodes a protein with endoribonuclease activity that binds polyuridine-enriched single-stranded RNA. This gene was initially characterized based on its high expression in placenta but was mischaracterized as a serine protease. In mouse, this gene promotes tolerance to self-antigens by regulating B cell activation-induced cell death (AICD). The protein may be useful as a tumor marker. Multiple alternatively spliced transcript variants encoding distinct protein isoforms have been found for this gene.

## Application Notes

Optimal dilution of the Uridylate-specific endoribonuclease antibody should be determined by the researcher.

## Immunogen

Recombinant human protein (amino acids K20-T386) was used as the immunogen for the Uridylate-specific endoribonuclease antibody.

## Storage

After reconstitution, the Uridylate-specific endoribonuclease antibody can be stored for up to one month at 4°C. For long-

term, aliquot and store at -20oC. Avoid repeated freezing and thawing.