

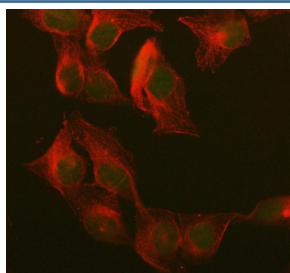
UCHL3 Antibody / Ubiquitin C-terminal hydrolase L3 [clone 26U65] (RQ8920)

Catalog No.	Formulation	Size
RQ8920	Antibody in PBS with 0.02% sodium azide, 50% glycerol and 0.4-0.5mg/ml BSA	100 ul

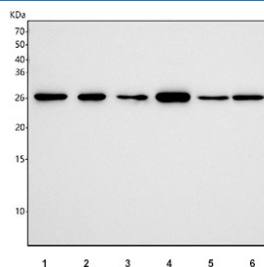
Recombinant **RABBIT MONOCLONAL**

[Bulk quote request](#)

Availability	1-2 weeks
Species Reactivity	Human, Mouse, Rat
Format	Purified
Host	Rabbit
Clonality	Recombinant Rabbit Monoclonal
Isotype	Rabbit IgG
Clone Name	26U65
Purity	Affinity purified
UniProt	P15374
Localization	Nucleus, Cytoplasm, Golgi
Applications	Western Blot : 1:500 Immunofluorescence : 1:50
Limitations	This UCHL3 antibody is available for research use only.



Immunofluorescent staining of FFPE human U-2 OS cells with UCHL3 antibody (green) and Alpha Tubulin mAb (red). HIER: steam section in pH6 citrate buffer for 20 min.



Western blot testing of 1) human K562, 2) human 293T, 3) human A431, 4) human Caco-2, 5) rat heart and 6) mouse heart tissue lysate with UCHL3 antibody. Predicted molecular weight ~26 kDa.

Description

UCHL3 (Ubiquitin carboxyl-terminal hydrolase isozyme L3) is a deubiquitinating enzyme that belongs to the ubiquitin C-terminal hydrolase family. It functions by processing ubiquitin precursors and recycling ubiquitin from ubiquitinated proteins, thereby maintaining cellular ubiquitin homeostasis. Researchers often use a UCHL3 antibody to explore its role in protein turnover and cellular quality control.

UCHL3 is widely expressed across tissues and has been linked to key biological processes including DNA repair, cell cycle regulation, and stress responses. Dysregulation of UCHL3 has been associated with cancer, neurodegeneration, and impaired protein degradation pathways. Employing a UCHL3 antibody provides insights into its diverse cellular functions and disease associations.

NSJ Bioreagents offers a high-quality UCHL3 antibody validated for applications such as western blot, immunohistochemistry, and immunoprecipitation. Using a UCHL3 antibody ensures sensitive and reproducible detection in studies of ubiquitin biology, proteostasis, and disease mechanisms.

Application Notes

Optimal dilution of the UCHL3 antibody should be determined by the researcher.

Immunogen

A synthetic peptide specific to human UCHL3 was used as the immunogen for the UCHL3 antibody.

Storage

Store the UCHL3 antibody at -20°C.