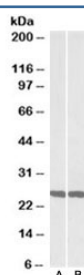


UCHL1 Antibody / PGP9.5 (R34038)

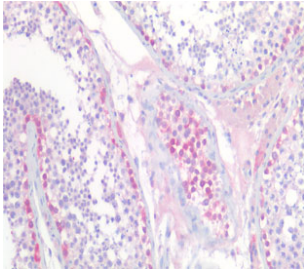
Catalog No.	Formulation	Size
R34038-100UG	0.5 mg/ml in 1X TBS, pH7.3, with 0.5% BSA (US sourced) and 0.02% sodium azide	100 ug

[Bulk quote request](#)

Availability	1-3 business days
Species Reactivity	Human, Mouse, Rat
Predicted Reactivity	Dog, Pig, Cow
Format	Antigen affinity purified
Clonality	Polyclonal (goat origin)
Isotype	Goat Ig
Purity	Antigen affinity
Gene ID	7345
Localization	Cytoplasmic, Nuclear
Applications	Western Blot : 0.01-0.03ug/ml Immunohistochemistry (FFPE) : 5ug/ml ELISA (peptide) LOD : 1:1000
Limitations	This UCHL1 antibody is available for research use only.



Western blot testing of mouse [A] and rat [B] brain lysate with UCHL1 antibody at 0.01ug/ml. Predicted molecular weight ~25 kDa.



IHC staining of FFPE human testis tissue with UCHL1 antibody at 5ug/ml. Required HIER: steamed antigen retrieval with pH6 citrate buffer; AP-staining.

Description

Additional name(s) for this target protein: Ubiquitin carboxyl-terminal esterase L1

Application Notes

Optimal dilution of the UCHL1 antibody should be determined by the researcher.

Immunogen

Amino acids EVRFSVALCK were used as the immunogen for this UCHL1 antibody.

Storage

Aliquot and store the UCHL1 antibody at -20oC.