

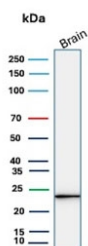
UCHL1 Antibody / Deubiquitinase Western Blot Antibody [clone rUCHL1/8057] (V5030)

Catalog No.	Formulation	Size
V5030-100UG	0.2 mg/ml in 1X PBS with 0.1 mg/ml BSA (US sourced), 0.05% sodium azide	100 ug
V5030-20UG	0.2 mg/ml in 1X PBS with 0.1 mg/ml BSA (US sourced), 0.05% sodium azide	20 ug
V5030SAF-100UG	1 mg/ml in 1X PBS; BSA free, sodium azide free	100 ug

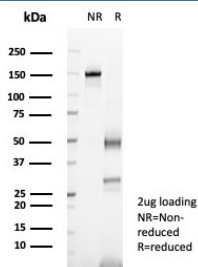
Recombinant **MOUSE MONOCLONAL**

[Bulk quote request](#)

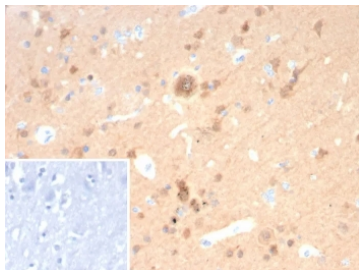
Availability	1-3 business days
Species Reactivity	Human
Format	Purified
Host	Mouse
Clonality	Recombinant Mouse Monoclonal
Isotype	Mouse IgG1, kappa
Clone Name	rUCHL1/8057
Purity	Protein A/G affinity
UniProt	P09936
Localization	Cytoplasm, ER membrane
Applications	Immunohistochemistry (FFPE) : 1-2ug/ml for 30 min at RT Western Blot : 2-4ug/ml
Limitations	This UCHL1 antibody is available for research use only.



UCHL1 Antibody for WB. Western blot analysis in human brain lysate. Human brain tissue lysate stained with UCHL1 Antibody for WB, also known as Deubiquitinase Western Blot Antibody and Ubiquitin C-terminal hydrolase L1 antibody, shows a clear band at approximately 25 kDa, consistent with the predicted molecular weight of UCHL1 / PGP9.5. The sharp band profile supports its use for detecting this deubiquitinating enzyme in studies of ubiquitin-mediated protein turnover and proteasome pathway regulation.



SDS-PAGE analysis of purified, BSA-free UCHL1 Antibody / Deubiquitinase Western Blot Antibody (clone rUCHL1/8057) as confirmation of integrity and purity.



IHC staining of FFPE human cerebellum tissue with UCHL1 antibody (clone rUCHL1/8057). Inset: PBS used in place of primary Ab (secondary Ab negative control). HIER: boil tissue sections in pH 9 10mM Tris with 1mM EDTA for 20 min and allow to cool before testing.

Description

Ubiquitin C-terminal hydrolase L1 (UCHL1) is a cytoplasmic deubiquitinase that plays a critical role in ubiquitin recycling and regulation of protein degradation pathways. The UCHL1 Antibody - Deubiquitinase Western Blot Antibody is specifically developed for western blot applications focused on enzymatic deubiquitinase detection, making it highly suited for studies of ubiquitin-dependent protein turnover and proteostasis.

UCHL1 Antibody - Deubiquitinase Western Blot Antibody, also referred to as PGP9.5 antibody or ubiquitin C-terminal hydrolase L1 antibody, is optimized for identifying UCHL1 as a functional deubiquitinating enzyme rather than simply a structural protein. UCHL1 catalyzes the hydrolysis of ubiquitin from conjugated protein substrates and ubiquitin precursors, directly regulating intracellular ubiquitin pools and influencing stability of numerous signaling proteins. Western blot detection of UCHL1 therefore provides a direct readout of deubiquitinase-associated activity within the ubiquitin-proteasome system.

This recombinant mouse monoclonal UCHL1 Antibody (clone rUCHL1/8057) is engineered for high-specificity detection of deubiquitinase expression in western blot assays. Its recombinant monoclonal format ensures controlled epitope recognition and reduced non-specific binding, which is essential for accurately monitoring enzymatic regulators within complex lysates. The antibody is particularly valuable in experiments examining ubiquitination dynamics, proteasomal degradation pathways, and cellular stress responses that alter protein turnover.

UCHL1 is frequently investigated in cancer and neurobiology due to its role in maintaining protein homeostasis and regulating degradation of key regulatory proteins. Dysregulation of UCHL1 has been linked to altered ubiquitin signaling, accumulation of misfolded proteins, and changes in cell survival pathways. As a result, western blot analysis using a deubiquitinase-focused antibody enables researchers to track pathway-level changes rather than only protein presence.

A recombinant mouse monoclonal UCHL1 Antibody - Deubiquitinase Western Blot Antibody is ideally suited for western blot applications centered on ubiquitin system regulation, enzymatic protein turnover, and deubiquitinase-driven signaling mechanisms. Its positioning as a deubiquitinase-specific detection tool makes it distinct from general protein detection antibodies and highly relevant for mechanistic studies of ubiquitin-mediated cellular processes.

Application Notes

Optimal dilution of the UCHL1 Antibody / Deubiquitinase Western Blot Antibody should be determined by the researcher.

Immunogen

Recombinant full-length human UCHL1 protein was used as the immunogen for the UCHL1 Antibody / Deubiquitinase Western Blot Antibody.

Storage

Aliquot the UCHL1 antibody and store frozen at -20oC or colder. Avoid repeated freeze-thaw cycles.

Alternate Names

PGP9.5 antibody, UCHL1 protein antibody, Ubiquitin C-terminal hydrolase L1 antibody, Deubiquitinating enzyme UCHL1 antibody