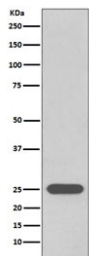


UchL1 Antibody / PGP9.5 [clone AAAC-21] (RQ5296)

Catalog No.	Formulation	Size
RQ5296	Antibody in PBS with 0.02% sodium azide, 50% glycerol and 0.4-0.5mg/ml BSA	100 ul

[Bulk quote request](#)

Availability	1-2 weeks
Species Reactivity	Human
Format	Purified
Host	Rabbit
Clonality	Rabbit Monoclonal
Isotype	Rabbit IgG
Clone Name	AAAC-21
Purity	Affinity purified
UniProt	P09936
Applications	Western Blot : 1:500-1:2000
Limitations	This UchL1 antibody is available for research use only.



Western blot testing of human 293T cell lysate with UchL1 antibody. Predicted molecular weight ~25 kDa.

Description

The protein encoded by the UCHL1 gene belongs to the peptidase C12 family. This enzyme is a thiol protease that hydrolyzes a peptide bond at the C-terminal glycine of ubiquitin. This gene is specifically expressed in the neurons and in cells of the diffuse neuroendocrine system. Mutations in this gene may be associated with Parkinson disease.

Application Notes

Optimal dilution of the UchL1 antibody should be determined by the researcher.

Immunogen

A synthetic peptide specific to human PGP9.5 / UCHL1 was used as the immunogen for the UchL1 antibody.

Storage

Store the UchL1 antibody at -20oC.