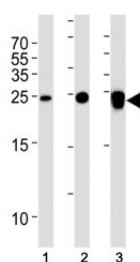


UCHL1 Antibody [clone 696CT2.1.4] (F52332)

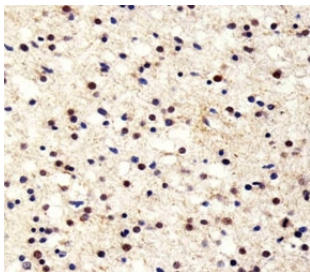
Catalog No.	Formulation	Size
F52332-0.4ML	In 1X PBS, pH 7.4, with 0.09% sodium azide	0.4 ml
F52332-0.08ML	In 1X PBS, pH 7.4, with 0.09% sodium azide	0.08 ml

[Bulk quote request](#)

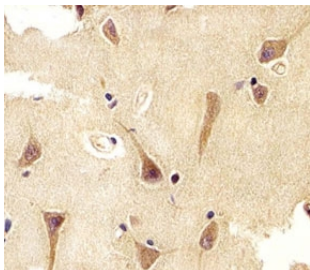
Availability	1-3 business days
Species Reactivity	Human, Rat
Predicted Reactivity	Bovine, Mouse, Pig, Primate
Format	Purified
Host	Mouse
Clonality	Monoclonal (mouse origin)
Isotype	Mouse IgG1
Clone Name	696CT2.1.4
Purity	Purified
UniProt	P09936
Applications	IHC (Paraffin) : 1:25 Western Blot : 1:1000
Limitations	This UCHL1 antibody is available for research use only.



UCHL1 antibody western blot analysis in (1) 293T, (2) NCI-H1299 and (3) rat PC-12 lysate. Predicted molecular weight ~25 kDa.



Immunohistochemical analysis of paraffin-embedded human astroglioma section using UCHL1 antibody at 1:25 dilution.



Immunohistochemical analysis of paraffin-embedded human brain using UCHL1 antibody at 1:25 dilution.

Description

Ubiquitin-protein hydrolase involved both in the processing of ubiquitin precursors and of ubiquitinated proteins. This enzyme is a thiol protease that recognizes and hydrolyzes a peptide bond at the C-terminal glycine of ubiquitin. Also binds to free monoubiquitin and may prevent its degradation in lysosomes. The homodimer may have ATP-independent ubiquitin ligase activity.

Application Notes

Titration of the UCHL1 antibody may be required due to differences in protocols and secondary/substrate sensitivity.

Immunogen

This UCHL1 antibody was produced from mice immunized with a KLH conjugated synthetic peptide selected from the 185-214 region of human UCHL1.

Storage

Aliquot the UCHL1 antibody and store frozen at -20oC or colder. Avoid repeated freeze-thaw cycles.