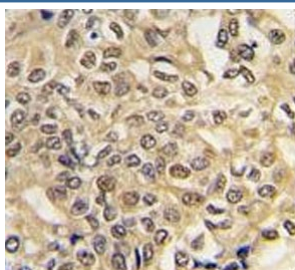


## Ubiquitin-like modifier-activating enzyme 1 Antibody / UBA1 (F54754)

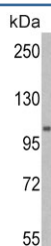
Catalog No.	Formulation	Size
F54754-0.4ML	In 1X PBS, pH 7.4, with 0.09% sodium azide	0.4 ml
F54754-0.08ML	In 1X PBS, pH 7.4, with 0.09% sodium azide	0.08 ml

**Bulk quote request**

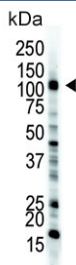
<b>Availability</b>	1-3 business days
<b>Species Reactivity</b>	Human, Mouse
<b>Format</b>	Purified
<b>Clonality</b>	Polyclonal (rabbit origin)
<b>Isotype</b>	Rabbit Ig
<b>Purity</b>	Purified
<b>UniProt</b>	P22314
<b>Localization</b>	Cytoplasmic, nuclear
<b>Applications</b>	Immunohistochemistry (FFPE) : 1:25 Western Blot : 1:500-1:2000
<b>Limitations</b>	This Ubiquitin-like modifier-activating enzyme 1 antibody is available for research use only.



IHC testing of FFPE human hepatocellular carcinoma tissue with Ubiquitin-like modifier-activating enzyme 1 antibody. HIER: steam section in pH6 citrate buffer for 20 min and allow to cool prior to staining.



Western blot testing of mouse stomach tissue lysate with Ubiquitin-like modifier-activating enzyme 1 antibody. Expected molecular weight: ~118/114 kDa (isoforms a/b).



Western blot testing of human HL60 cell lysate with Ubiquitin-like modifier-activating enzyme 1 antibody. Expected molecular weight: ~118/114 kDa (isoforms a/b).

## Description

UBE1 / UBA1 catalyzes the first step in ubiquitin conjugation to mark cellular proteins for degradation. This gene complements an X-linked mouse temperature-sensitive defect in DNA synthesis, and thus may function in DNA repair. It is part of a gene cluster on chromosome Xp11.23. Alternative splicing results in 2 transcript variants encoding the same protein, but with different 5' UTR.

## Application Notes

The stated application concentrations are suggested starting points. Titration of the Ubiquitin-like modifier-activating enzyme 1 antibody may be required due to differences in protocols and secondary/substrate sensitivity.

## Immunogen

A portion of amino acids 1026-1058 from the human protein was used as the immunogen for the Ubiquitin-like modifier-activating enzyme 1 antibody.

## Storage

Aliquot the Ubiquitin-like modifier-activating enzyme 1 antibody and store frozen at -20°C or colder. Avoid repeated freeze-thaw cycles.