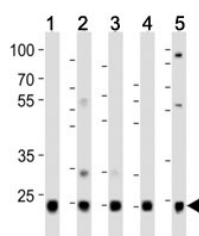


Ubiquitin Antibody (F52850)

Catalog No.	Formulation	Size
F52850-0.4ML	In 1X PBS, pH 7.4, with 0.09% sodium azide	0.4 ml
F52850-0.08ML	In 1X PBS, pH 7.4, with 0.09% sodium azide	0.08 ml

[Bulk quote request](#)

Availability	1-3 business days
Species Reactivity	Human, Mouse, Rat
Predicted Reactivity	Bovine, C. elegans, Chicken, Drosophila, Hamster, Pig, Primate, Rabbit, Xenopus
Format	Antigen affinity purified
Host	Rabbit
Clonality	Polyclonal (rabbit origin)
Isotype	Rabbit Ig
Purity	Antigen affinity
UniProt	P0CG47
Applications	Western Blot : 1:1000
Limitations	This Ubiquitin antibody is available for research use only.



Western blot analysis of lysate from HeLa (1), HepG2 (2), Jurkat (3), mouse liver (4), rat kidney (5) lysate using UBB/ Ubiquitin antibody at 1:1000.

Description

Ubiquitin exists either covalently attached to another protein, or free (unanchored). When covalently bound, it is conjugated to target proteins via an isopeptide bond either as a monomer (monoubiquitin), a polymer linked via different Lys residues of the ubiquitin (polyubiquitin chains) or a linear polymer linked via the initiator Met of the ubiquitin (linear polyubiquitin chains). Polyubiquitin chains, when attached to a target protein, have different functions depending on the Lys residue of the ubiquitin that is linked: Lys-6-linked may be involved in DNA repair; Lys-11-linked is involved in ERAD

(endoplasmic reticulum-associated degradation) and in cell-cycle regulation; Lys-29-linked is involved in lysosomal degradation; Lys-33-linked is involved in kinase modification; Lys-48-linked is involved in protein degradation via the proteasome; Lys-63-linked is involved in endocytosis, DNA-damage responses as well as in signaling processes leading to activation of the transcription factor NF-kappa-B. Linear polymer chains formed via attachment by the initiator Met lead to cell signaling. Ubiquitin is usually conjugated to Lys residues of target proteins, however, in rare cases, conjugation to Cys or Ser residues has been observed. When polyubiquitin is free (unanchored-polyubiquitin), it also has distinct roles, such as in activation of protein kinases, and in signaling.

Application Notes

Titration of the Ubiquitin antibody may be required due to differences in protocols and secondary/substrate sensitivity.

Immunogen

This Ubiquitin antibody was produced from a rabbit immunized with a KLH conjugated synthetic peptide between 25-57amino acids from the N-terminal region of the human protein.

Storage

Aliquot the Ubiquitin antibody and store frozen at -20oC or colder. Avoid repeated freeze-thaw cycles.