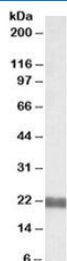


## UBEF2 Antibody (R35941)

Catalog No.	Formulation	Size
R35941-100UG	0.5 mg/ml in 1X TBS, pH7.3, with 0.5% BSA (US sourced) and 0.02% sodium azide	100 ug

[Bulk quote request](#)

Availability	1-3 business days
Species Reactivity	Human, Mouse, Rat
Predicted Reactivity	Cow, Dog, Pig
Format	Antigen affinity purified
Host	Goat
Clonality	Polyclonal (goat origin)
Isotype	Goat Ig
Purity	Antigen affinity
Gene ID	140739
Applications	Western Blot : 0.05-0.2ug/ml ELISA (peptide) LOD : 1:32000
Limitations	This UBEF2 antibody is available for research use only.



Western blot testing of rat pancreas lysate with UBEF2 antibody at 0.05ug/ml. Predicted molecular weight: ~21kDa.

### Description

Additional name(s) for this target protein: Ubiquitin-conjugating enzyme E2F; NEDD8 conjugating enzyme

### Application Notes

Optimal dilution of the UBEF2 antibody should be determined by the researcher.

## Immunogen

Amino acids SKLKRDDGLKGSRT were used as the immunogen for this UBEF2 antibody.

## Storage

Aliquot and store the UBEF2 antibody at -20oC.