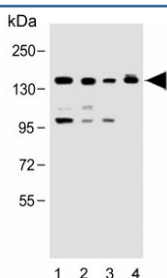


UBE4B Antibody (F54394)

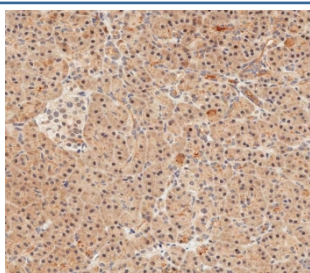
| Catalog No. | Formulation | Size |
|---------------|--|---------|
| F54394-0.4ML | In 1X PBS, pH 7.4, with 0.09% sodium azide | 0.4 ml |
| F54394-0.08ML | In 1X PBS, pH 7.4, with 0.09% sodium azide | 0.08 ml |

[Bulk quote request](#)

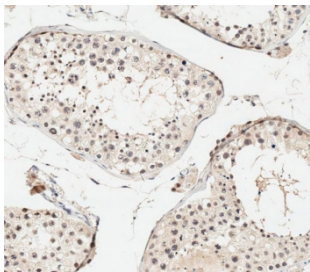
| | |
|---------------------------|---|
| Availability | 1-3 business days |
| Species Reactivity | Human, Mouse |
| Format | Purified |
| Clonality | Polyclonal (rabbit origin) |
| Isotype | Rabbit Ig |
| Purity | Antigen affinity purified |
| UniProt | O95155 |
| Localization | Nuclear, cytoplasmic |
| Applications | Western Blot : 1:500-1:2000 Immunohistochemistry (FFPE) : 1:25 |
| Limitations | This UBE4B antibody is available for research use only. |



Western blot testing of human 1) K562, 2) Raji, 3) HeLa and 4) NIH 3T3 lysate with UBE4B antibody. Predicted molecular weight ~146 kDa.



IHC testing of FFPE human pancreas tissue with UBE4B antibody. HIER: steam section in pH6 citrate buffer for 20 min and allow to cool prior to staining.



IHC testing of FFPE human testis tissue with UBE4B antibody. HIER: steam section in pH6 citrate buffer for 20 min and allow to cool prior to staining.

Description

The modification of proteins with ubiquitin is an important cellular mechanism for targeting abnormal or short-lived proteins for degradation. Ubiquitination involves at least three classes of enzymes: ubiquitin-activating enzymes, or E1s, ubiquitin-conjugating enzymes, or E2s, and ubiquitin-protein ligases, or E3s. UBE4B represents an additional conjugation factor, E4, which is involved in multiubiquitin chain assembly. UBE4B also the strongest candidate among the neuroblastoma tumor suppressors.

Application Notes

The stated application concentrations are suggested starting points. Titration of the UBE4B antibody may be required due to differences in protocols and secondary/substrate sensitivity.

Immunogen

A portion of amino acids 112-142 from the human protein was used as the immunogen for the UBE4B antibody.

Storage

Aliquot the UBE4B antibody and store frozen at -20oC or colder. Avoid repeated freeze-thaw cycles.