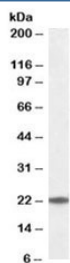


UBE2T Antibody (R35368)

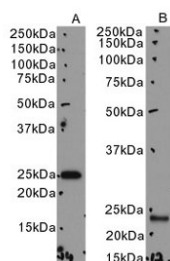
Catalog No.	Formulation	Size
R35368-100UG	0.5 mg/ml in 1X TBS, pH7.3, with 0.5% BSA (US sourced) and 0.02% sodium azide	100 ug

[Bulk quote request](#)

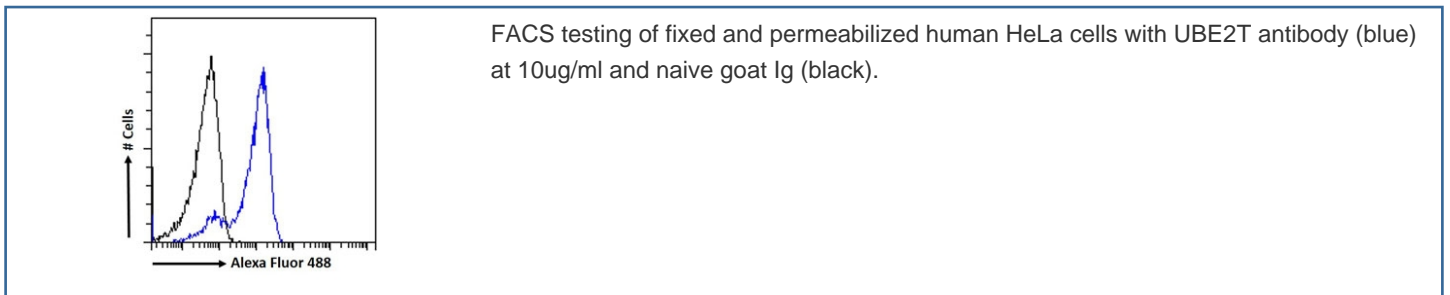
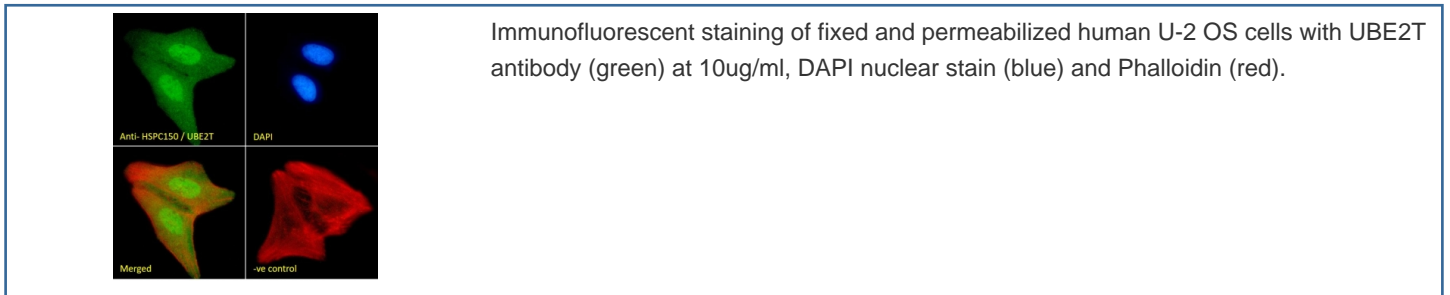
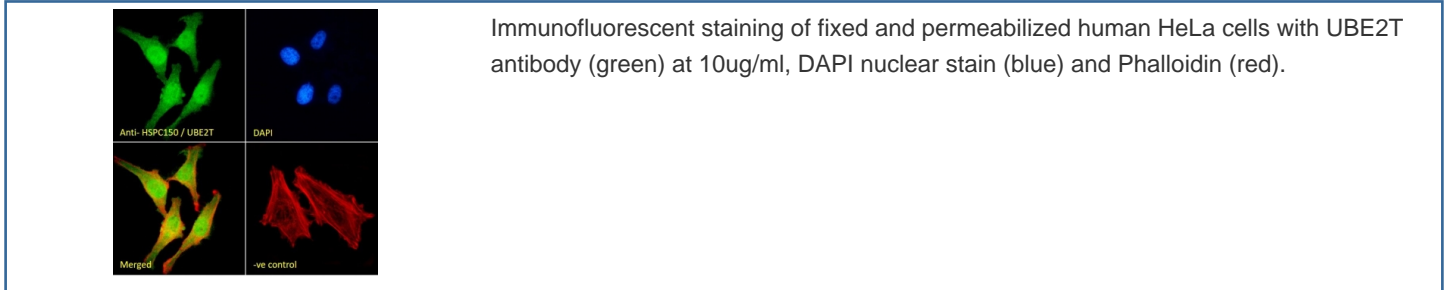
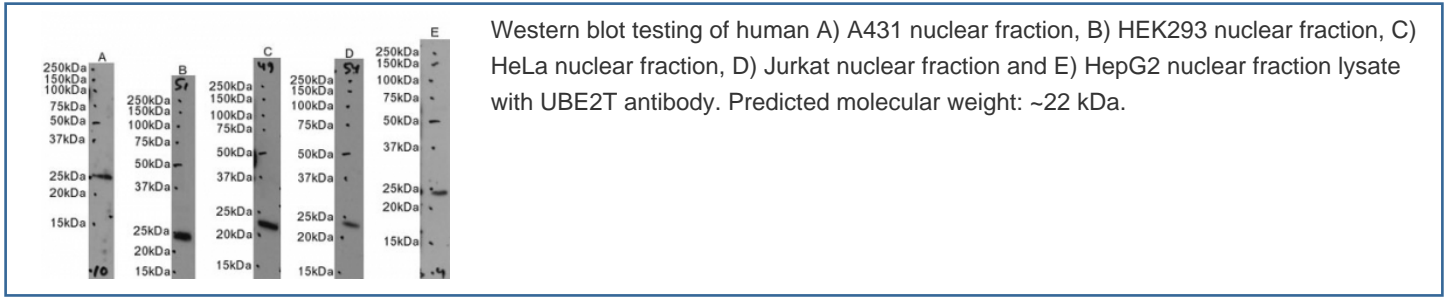
Availability	1-3 business days
Species Reactivity	Human
Format	Antigen affinity purified
Host	Goat
Clonality	Polyclonal (goat origin)
Isotype	Goat Ig
Purity	Antigen affinity
Gene ID	29089
Applications	Western Blot : 0.1-0.3ug/ml Immunofluorescence : 10ug/ml Flow Cytometry : 10ug/ml ELISA (peptide) LOD : 1:16000
Limitations	This UBE2T antibody is available for research use only.



Western blot testing of human K562 cell lysate with UBE2T antibody at 0.1ug/ml.
Predicted/observed molecular weight: ~22 kDa.



Western blot testing of human A) K562 and B) ThP-1 cell lysate with UBE2T antibody.
Predicted molecular weight: ~22 kDa.



Description

Additional name(s) for this target protein: Ubiquitin-conjugating enzyme E2T, HSPC150

Application Notes

Optimal dilution of the UBE2T antibody should be determined by the researcher.

Immunogen

Amino acids QLVGIEKKFHPDV were used as the immunogen for this UBE2T antibody.

Storage

Aliquot and store the UBE2T antibody at -20oC.

