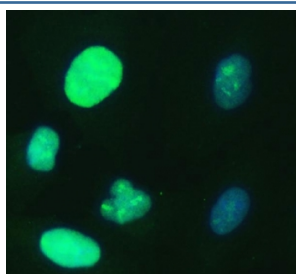


## UBE2S Antibody (RQ7437)

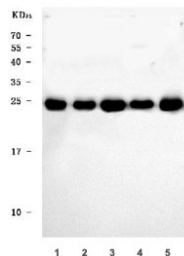
Catalog No.	Formulation	Size
RQ7437	0.5mg/ml if reconstituted with 0.2ml sterile DI water	100 ug

**Bulk quote request**

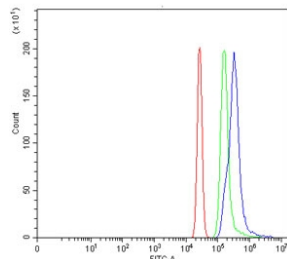
<b>Availability</b>	1-3 business days
<b>Species Reactivity</b>	Human, Rat
<b>Format</b>	Antigen affinity purified
<b>Host</b>	Rabbit
<b>Clonality</b>	Polyclonal (rabbit origin)
<b>Isotype</b>	Rabbit IgG
<b>Purity</b>	Antigen affinity purified
<b>Buffer</b>	Lyophilized from 1X PBS with 2% Trehalose
<b>UniProt</b>	Q16763
<b>Localization</b>	Cytoplasmic, nuclear
<b>Applications</b>	Western Blot : 0.5-1ug/ml Immunofluorescence : 5ug/ml Flow Cytometry : 1-3ug/million cells Direct ELISA : 0.1-0.5ug/ml
<b>Limitations</b>	This UBE2S antibody is available for research use only.



Immunofluorescent staining of FFPE human A549 cells with UBE2S antibody (green) and DAPI nuclear stain (blue). HIER: steam section in pH6 citrate buffer for 20 min.



Western blot testing of 1) human 293T, 2) human HeLa, 3) human Jurkat, 4) human MCF-7 and 5) rat testis tissue lysate with UBE2S antibody. Predicted molecular weight ~24 kDa.



Flow cytometry testing of human HL60 cells with UBE2S antibody at 1ug/million cells (blocked with goat sera); Red=cells alone, Green=isotype control, Blue= UBE2S antibody.

## Description

This gene encodes a member of the ubiquitin-conjugating enzyme family. The encoded protein is able to form a thiol ester linkage with ubiquitin in a ubiquitin activating enzyme-dependent manner, a characteristic property of ubiquitin carrier proteins.

## Application Notes

Optimal dilution of the UBE2S antibody should be determined by the researcher.

## Immunogen

E. coli-derived recombinant human protein (amino acids E6-H155) was used as the immunogen for the UBE2S antibody.

## Storage

After reconstitution, the UBE2S antibody can be stored for up to one month at 4oC. For long-term, aliquot and store at -20oC. Avoid repeated freezing and thawing.