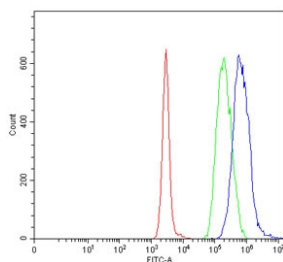


UBE2O Antibody / Ubiquitin-conjugating enzyme E2 O (RQ7542)

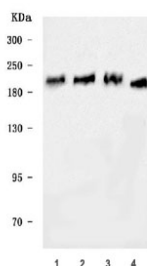
Catalog No.	Formulation	Size
RQ7542	0.5mg/ml if reconstituted with 0.2ml sterile DI water	100 ug

Bulk quote request

Availability	1-3 business days
Species Reactivity	Human, Rat
Format	Antigen affinity purified
Clonality	Polyclonal (rabbit origin)
Isotype	Rabbit IgG
Purity	Antigen affinity purified
Buffer	Lyophilized from 1X PBS with 2% Trehalose
UniProt	Q9C0C9
Applications	Western Blot : 0.5-1ug/ml Flow Cytometry : 1-3ug/million cells Direct ELISA : 0.1-0.5ug/ml
Limitations	This UBE2O antibody is available for research use only.



Flow cytometry testing of human Daudi cells with UBE2O antibody at 1ug/million cells (blocked with goat sera); Red=cells alone, Green=isotype control, Blue= UBE2O antibody.



Western blot testing of 1) human 293T, 2) human HeLa, 3) human Jurkat and 4) rat testis tissue lysate with UBE2O antibody. Predicted molecular weight ~141 kDa but commonly observed at up to ~230 kDa.

Description

Ubiquitin-conjugating enzyme E2 O is a protein that in humans is encoded by the UBE2O gene. Enables ubiquitin conjugating enzyme activity and ubiquitin protein ligase activity. Involved in positive regulation of BMP signaling pathway; protein ubiquitination; and retrograde transport, endosome to Golgi. Located in cytoplasm and nuclear body.

Application Notes

Optimal dilution of the UBE2O antibody should be determined by the researcher.

Immunogen

E. coli-derived recombinant human protein (amino acids R150-A1283) was used as the immunogen for the UBE2O antibody.

Storage

After reconstitution, the UBE2O antibody can be stored for up to one month at 4°C. For long-term, aliquot and store at -20°C. Avoid repeated freezing and thawing.