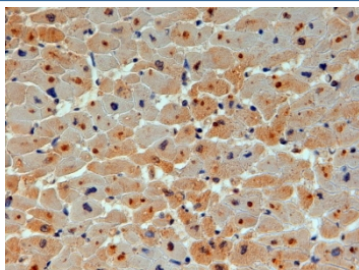


## UBE2O Antibody (R33146)

Catalog No.	Formulation	Size
R33146-100UG	0.5 mg/ml in 1X TBS, pH7.3, with 0.5% BSA (US sourced) and 0.02% sodium azide	100 ug

[Bulk quote request](#)

Availability	1-3 business days
Species Reactivity	Human
Predicted Reactivity	Cow, Dog, Mouse, Pig, Rat
Format	Antigen affinity purified
Host	Goat
Clonality	Polyclonal (goat origin)
Isotype	Goat Ig
Purity	Antigen affinity
Gene ID	63893
Applications	Immunohistochemistry (FFPE) : 4-6ug/ml ELISA (peptide) LOD : 1:32000
Limitations	This UBE2O antibody is available for research use only.



IHC testing of FFPE human heart with UBE2O antibody at 4ug/ml. HIER: steamed with pH6 citrate buffer, HRP-staining.

### Description

Additional name(s) for this target protein: Ubiquitin-conjugating enzyme E2O

### Application Notes

Optimal dilution of the UBE2O antibody should be determined by the researcher.

## Immunogen

Amino acids ALLEAGMPECTEDK were used as the immunogen for this UBE2O antibody.

## Storage

Aliquot and store the UBE2O antibody at -20oC.