

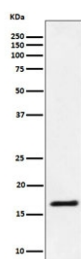
## UBE2L3 Antibody / Ubiquitin-conjugating enzyme E2 L3 [clone 28U62] (RQ8527)

Catalog No.	Formulation	Size
RQ8527	Antibody in PBS with 0.02% sodium azide, 50% glycerol and 0.4-0.5mg/ml BSA	100 ul

Recombinant **RABBIT MONOCLONAL**

[Bulk quote request](#)

Availability	1-3 days
Species Reactivity	Human
Format	Purified
Clonality	Recombinant Rabbit Monoclonal
Isotype	Rabbit IgG
Clone Name	28U62
Purity	Affinity chromatography
UniProt	P68036
Applications	Western Blot : 1:500-1:2000
Limitations	This UBE2L3 antibody is available for research use only.



Western blot testing of human Jurkat cell lysate with UBE2L3 antibody. Predicted molecular weight ~18 kDa.

### Description

Ubiquitin-conjugating enzyme E2 that specifically acts with HECT-type and RBR family E3 ubiquitin-protein ligases. [UniProt]

### Application Notes

Optimal dilution of the UBE2L3 antibody should be determined by the researcher.

## Immunogen

A synthetic peptide from human Ubiquitin-conjugating enzyme E2 L3 protein was used as the immunogen for the UBE2L3 antibody.

## Storage

Store the UBE2L3 antibody at -20oC.